



# SEND INFORMATION

Beckfoot School Open Evening

11<sup>th</sup> September 2025

# Who Are We?



- Beckfoot is a mainstream secondary school with roughly 1600 students on roll, including a sixth form.
- We have a Resourced Provision for students with physical difficulties.
- Each year group has 9 tutor groups.
- We offer a broad and balanced curriculum, including English, maths, science, languages, humanities and creative subjects.
- All students are expected to access the curriculum and are supported through Quality First Teaching in the classroom.

# The SEND team



Claire Smith  
SENDCo



Clare Graham  
Deputy SENDCo



Lynnette Beck  
SEND Admin

We also have a team of Teaching Assistants  
and Higher Level Teaching Assistants

# The Transition Journey



01

Communication between Beckfoot and primary school SEND, pastoral and safeguarding team.

02

Communication between Beckfoot SEND, pastoral and safeguarding teams and families.

03

Whole school transition events, including transition evening and transition day.

04

Additional transition visits as per communication between school SEND teams.

# How we share information



Information about all students stored on our Vulnerable Learners Index (VLI)

The VLI includes details about students' needs and how to support them in the classroom and around school.

SEND and Pastoral teams ensure the VLI is a live working document.

Relevant staff read their class and tutor group VLI information at least termly.

# Our Curriculum



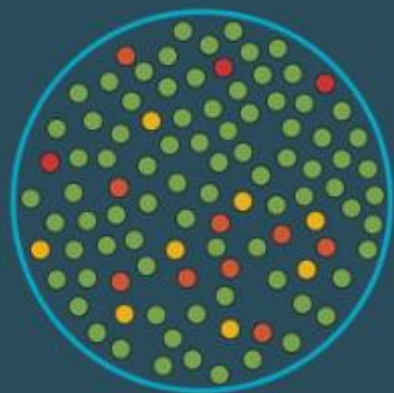
Aims to equip all students with the knowledge, skills and experiences to become successful learners and future ready young people.

Built around the four cornerstones of the Beckfoot Trust Vision: Confident Communicators; Knowledgeable and Expert Learners; Committed Community Contributors; and Future Ready Young People.

Works proactively with all stakeholders to break down barriers to achieving academic and personal goals.

A determination that no child is left behind; this determination means that our curriculum is adapted to suit SEND learners.

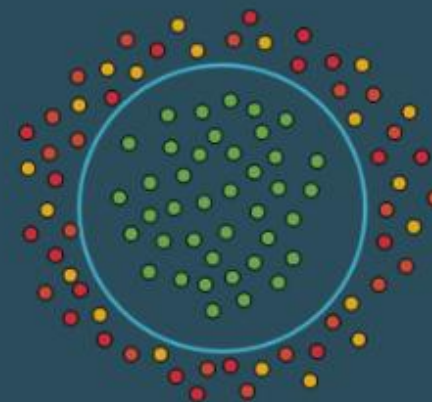
# What support looks like



Universal Offer

The aspiration for all students is to be able to access the universal offer - all students accessing learning within the classroom and making progress alongside their peers.

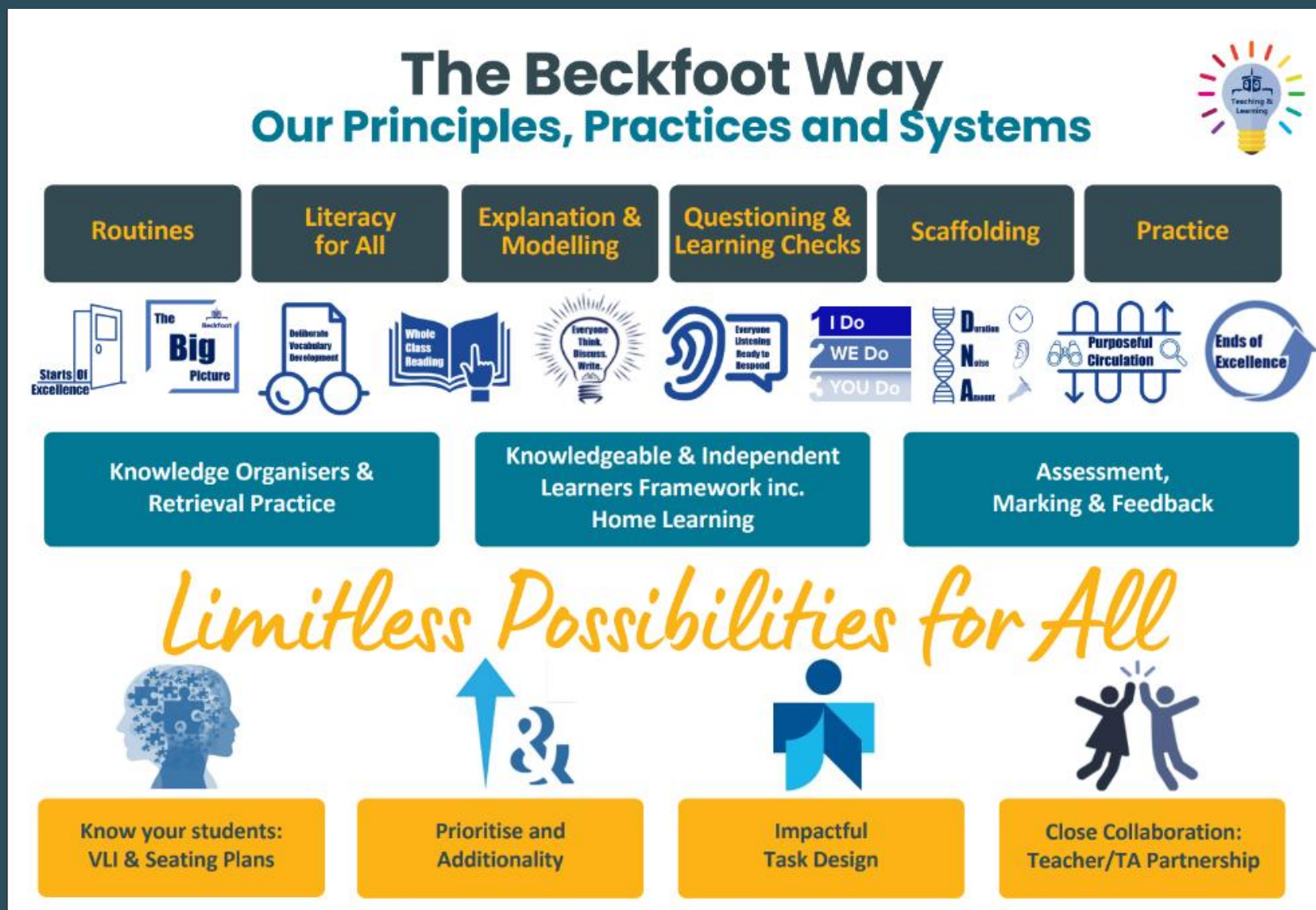
Some students may need some additional support outside of the classroom. This may include additional reading and maths intervention. Interventions happen at tutor time as we don't remove students from their lessons for these interventions.



Universal Plus

# The Beckfoot Way

CREATING  
REMARKABLE  
SCHOOLS





# Additionality and Prioritisation - in the classroom



Quality First Teaching in every classroom.

Strategies in the VLI implemented to support students in accessing their learning.

TA support deployed to support in classrooms with a higher level of SEND need.

# Additionality and Prioritisation - out of the classroom



TA-supported break club and a lunchtime table for students who need additional support during unstructured times.

Targeted extra-curricular clubs during breaktime such as Lego, Gardening, Warhammer, Table Cricket.

Homework club after school.

Use of a quieter entrance and space to hang coats where needed.

# Your Next Steps



01

Tour the school, talk to staff and students, and consider if this setting is right for your child.

02

Visit at least two other secondary schools to allow you to make informed comparisons.

03

Visit our website – there is a wealth of information on our curriculum, teaching and learning and SEND.

04

Talk through your thoughts with your primary school SENCo, who knows your child best, to help inform decision-making.

## Enjoy your evening!