

BECKFOOT SCHOOL



Transition

Year 7

Ready for Beckfoot



enjoy learn **succeed**



BECKFOOT STRATEGIC VISION 2023-25

LIMITLESS POSSIBILITIES FOR ALL

CORE PURPOSE

Our school is a warm and welcoming community where we all belong. Our young people believe in limitless possibilities because they are challenged, engaged and excited about learning as a result of their curriculum experiences. They are confident, aspirational learners who will thrive in an ever-changing world as independent, positive and considerate young people.

IMPACT

Our students' outcomes and attendance place our school in the top 10% of all schools nationally.



STRATEGIC PRIORITIES

- Literacy is fundamental to enhancing the life chances of our young people. Every Beckfoot Learner will read, write and speak with confidence.
- Remarkable learning behaviours enable our young people to drive their academic success. Every Beckfoot learner will be reflective, motivated and ambitious.
- Academic and cultural experiences prepare our young people for an enriched and elevated future. Every Beckfoot learner will embrace the wealth of opportunities available to them within and beyond the classroom.
- Success for our young people is accelerated by our transformative professional development for all. Every Beckfoot learner will succeed because of our commitment to evidence informed practice.

A Very Warm Welcome

Welcome to Beckfoot School. We are thrilled that you have chosen us to educate your child. I hope this guide provides you with all the information you need whilst also capturing the unique ethos that makes Beckfoot so special.

Our school motto, created by students, is **‘Enjoy - Learn - Succeed’**. We are totally student centred. We expect every Beckfoot learner to enjoy school, be successful academically and become self-determined, outward looking and selfless young adults. Our culture is celebratory and aspirational. We want each young person to make a valuable contribution and in doing so, we hold the highest expectations of them. We expect that they will be in school every day and on time; that they will demonstrate a remarkable attitude to learning by doing their best in every lesson and that they will utilise every opportunity provided to them throughout their school career. We will encourage and help them to demonstrate that they care for one other and the world around them.

Ofsted graded the school ‘outstanding’ in every category in 2014 and we achieved the World Class Quality Mark in 2016, 2019 and permanently in 2022. Our aim is to continue to provide an outstanding example of truly great comprehensive education in this part of Bradford. We passionately believe that every young person has talent and it is the job of a great school to ensure that they fulfil it. Our curriculum has breadth, focuses on core skills and provides a route forward for every learner. We are extremely proud of the progress achieved for all groups of learners at all levels in recent years and our collective aim is to continue to build on this and be better year on year.

The key to our success is a team of staff who demonstrate absolute commitment to the vision and values of the school. Great teaching sits at the heart of all we do. Relationships matter. We only appoint teachers who relate well to young people, plan lessons and assess learning effectively so that we can guarantee that students feel valued, enjoy learning and make great progress. Alongside our teachers is an exceptionally talented group who form our Support and Administrative teams. They free teachers up to teach, allowing the school to continually move forward focused on our core business.

The relationship with our parents, community partners, primary feeder schools, colleges, universities and industry is fast evolving and will help to ensure the support every learner receives is first rate. We are hugely excited about our outstanding CEIAG (Careers Education Information, Advice and Guidance) programme and the opportunities that will bring to broaden horizons for our students.

We ask for your full support in working with your child to meet our expectations and day-to-day procedures; it’s important. We want you to feel free to contact us at any time.

Finally, we know this time can be a mixture of emotions for you and your child. As Headteacher, I want the best for every child as I would for my own and, collectively, we will work hard to ensure they are nurtured, feel safe and special. Your child will be supported to grow in confidence, feel they truly belong here and ultimately be successful as a result of being a Beckfooter.

Simon Wade
Headteacher



At Beckfoot Trust, we value family engagement and the role that we all play in supporting our children and young people to enjoy, learn and succeed. **We expect all our employees, our children/young people and our families to commit to working together to meet our mission of ‘creating remarkable school where no child is left behind’.** Our children/young people are more likely to succeed when adults work together in a mutually respectful partnership.

Our school sentence is: **Limitless possibilities for all**
Our values are: **Enjoy - Learn - Succeed**

The three way partnership in our Trust expects that:

The school will:

- Have high aspirations for all children and young people and work with families in removing barriers to learning
- Relentlessly strive to ensure all children/young people and families feel that our school is somewhere they are safe, are heard and belong
- Provide an ambitious broad and balanced knowledge-rich curriculum that develops a love of learning and prepares children and young people for the next step
- Provide a safe environment and opportunities for children/young people to develop age-appropriate independence, high self-esteem and effective communication skills
- Provide a culture where norms of behaviour are made very clear and children/young people know that expectations of them are high
- Develop learning habits through constant practice and through dedicated time so that children and young people are equipped for learning and life success
- Focus on developing great learners and great people through communicating the value of education and of being a good person
- Listen to the voice of the child and ensure all develop strong moral principles
- Communicate effectively with families about progress and behaviour
- Celebrate and communicate the positives so that all can thrive
- Provide opportunities for learning to be supported at home
- Actively listen and seek to resolve any difficulties that might emerge
- Deal with matters promptly and professionally, putting the interests of the child first when differences emerge
- Work to build trusting relationships, acknowledging where things could have been done better

Families will:

- Work with the school to advantage the child/young person, by supporting school policies for example, uniform, behaviour, home learning.
- Support 100% attendance wherever possible and report any absence promptly in line with the school policy
- Remove barriers or seek support with aspects that may interfere with excellent attendance; clean uniform, adequate sleep, healthy diet and exercise
- Keep school up to date with changes of circumstances, including contact numbers and addresses
- Have high aspirations for children/young people and provide opportunities to demonstrate a value for education
- Support the values of the school and work with children/young people to develop to be great learners and great people
- Support the school and play an active role in the child/young person's learning by attending meetings and events or making alternative arrangements where difficulties arise
- Inform school immediately of any issue or change of circumstance that may affect learning or behaviour in school
- Communicate directly with school if a problem arises within school, working in partnership to resolve an issue
- Treat all members of the school community with respect, in person and online, modelling civil behaviour to all children/young people
- Use social media responsibly and positively, not as a platform to air concerns or fuel campaigns against any members of the school community

The child/young person will:

- Come to school every day, on time, ready to learn, wearing the correct uniform
- Follow the school rules/expectations
- Respect other people and follow adult instruction so that all can be safe and belong
- Respect the school building and equipment
- Embrace challenge and be open to new learning, developing a remarkable mindset
- Work hard to develop as a great learner and great person
- Take responsibility for their own actions
- Tell a member of staff immediately if something is not right



Smart Uniform Policy and Equipment

In all aspects of appearance, our aim is personal smartness, demonstrating our pride as part of the Beckfoot community. We ask parents and carers to support our Smart Uniform Policy.

Compulsory items for school

- White (black for KS4) Beckfoot polo shirt with school logo.
- Blue (black for KS4) Beckfoot sweatshirt with school logo.
- Black tailored school trousers appropriate for school wear. No studs, leggings (stretch fabrics or Lycra), cropped trousers or jeans.
- Shoes should be traditional school style without any logo. No trainers, canvas shoes or fashion wear.
- Skirts should be traditional school style and knee length. No stretch fabrics or Lycra.
- Black full length plain socks, or plain black or flesh coloured tights. Sports socks should not be worn with school uniform.
- Excessive jewellery, make up and acrylic nails are not allowed.
- Hair colour should be natural in its entirety. No extreme styles or tramlines.
- One stud in each earlobe and/or nose stud is permitted. Other facial or body piercings are not allowed.
- Lanyards should be worn as part of our uniform.
- Outdoor coats and PE hoodies must not be worn in the building.
- Headscarves may be worn for religious purposes and should be either plain navy blue (KS3) or plain black (KS4).

Compulsory items for PE

Top half:

- Beckfoot branded polo shirt (choice of fitted or loose option)
- Optional Beckfoot branded rugby shirt
- Optional Beckfoot branded hoodie

Bottom half (choice of):

- Beckfoot branded leggings
- Beckfoot branded skort
- Beckfoot shorts
- Plain navy blue tracksuit bottoms (small logo allowed but not overt branding)

Footwear:

- Beckfoot branded navy blue long socks
- Plain white sports socks
- Trainers (no pumps)

Other:

- Shinpads are compulsory for football and hockey lessons
- All jewellery must be removed for PE lessons
- Hair bobbles/clips/bands required to keep hair out of face
- Navy blue base layers may be worn in winter



PE kit must be brought to every lesson even if the learner cannot participate in a practical capacity. Please see PE PLS for further information.

Following our governing body; AFPE (Association for Physical Education) and Bradford Council guidance, students must remove all jewellery for PE lessons. We will no longer be allowing students to use tape to cover piercings as this does not sufficiently prevent injury. Any student that does not remove jewellery will not be able to participate in practical PE lessons.

Individual adjustments to the uniform policy will be considered at the discretion of the Headteacher.

As with all our school expectations, failure to meet these standards will result in an immediate sanction as stated in our Positive Learning Strategy (PLS).

Smart Uniform Policy and Equipment

All uniform is available from Natasha Schoolwear (Bradford) and Whittakers Schoolwear (Shipley).

Each day students must bring:

- Their Independent Learning Booklet (ILB)
- An Independent Learning A4 Notebook
- Their lanyard
- A pencil case
- x3 blue or black biro
- x3 pencils
- A green pen
- A ruler
- A sharpener
- A rubber
- A compass
- A protractor
- A Casio scientific calculator (model: fx-85GT CW)
- Mini-whiteboard pen
- Mini-whiteboard rubber (small cloth/old sock work fine!)
- Glue stick
- A bag
- PE kit (on PE days)
- Trainers (optional for break time)



Scissors are not to be brought into school.

As with all our school expectations, failure to meet these standards will result in an immediate sanction as stated in our Positive Learning Strategy (PLS).

Attendance Matters

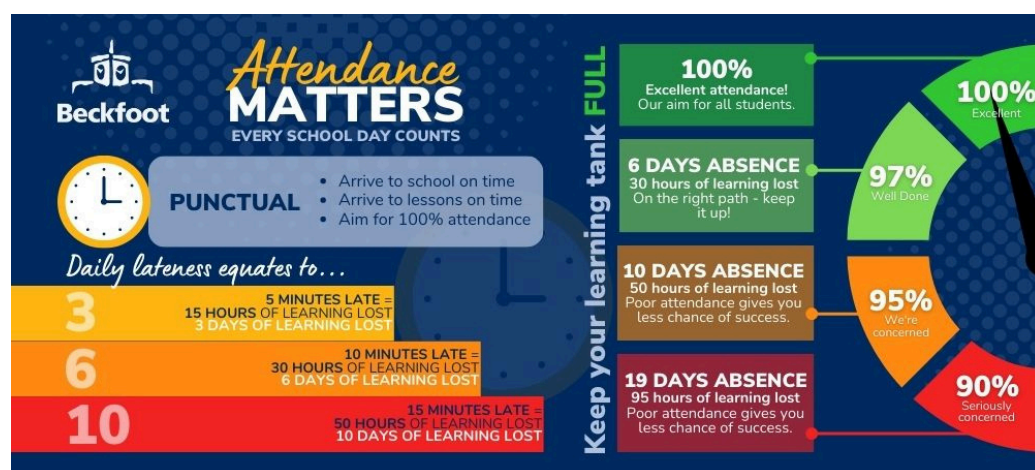
We want to ensure that all students receive an education which maximises opportunities to reach their potential. Promoting and supporting good attendance at school is essential to settling learning and succeeding, settling in, enjoying school and accessing school rewards. The school expects all students to aim for 100% attendance. An attendance level of under 95% will initiate intervention by the school. Below 90% attendance will trigger the involvement of external agencies and/or the local authority.

We understand that there are exceptional circumstances when levels of attendance may fall below 100% for reasons beyond the student and parent's control. That said these are very rare exceptions rather than the rule. According to NHS guidance, children do not require time off for: Colds; Cold sores; Conjunctivitis; Cough; Glandular fever, Hand, foot and mouth disease; Headache; Head lice; Sore throat; Threadworms; Tonsillitis; Warts and/or Verrucae. Please visit the Attendance section of the school website for further advice and information.

Should your child be too ill to attend school, please contact us on the first day of absence before 8:30am by Class Charts: 'Absence Messages' Email: absence@beckfoot.org Phone: and press 1 to record your absence message.

Punctuality

There is a significant link between punctuality and doing well at school. School starts promptly at 8.30am. Being 5 minutes late each day is equivalent to missing 3 days of school. In short, every minute in school matters! Lateless to school will be sanctioned as per our PLS.



Medical appointments

Doctors and dentist appointments should be made outside of school time. If this is not possible your child should miss the least amount of school time as possible. If an appointment is mid-morning they should come to school before their appointment and, if they are well enough, return to school after the appointment. Medical evidence will need to be provided.

Term time holidays

There are 13 weeks of holidays each academic year; we expect all parents/carers will take their family holidays whilst the school is closed. Holidays taken within term time will not be authorised.

School closure

In the event of bad weather or an emergency we will post the latest information onto the school website. It is also possible to subscribe to the School Closure Email Alert Service on Bradford Schools Online here: <https://bso.bradford.gov.uk/council/schools/alerts>

Communicating with you

Family Communication App

Our Family Communication App is Class Charts and it is available on IOS and Android and via the website. We will send an invitation to download the Family Communication App in September to Priority 1 contacts.

The App will provide you with school information, and individual information on your child/children.

The App:

- Allows you to view information and keep up to date with what's going on in school.
- Allows you to view key information about how your child is doing in school.
- Informs you about your child's activity, including school letters, attendance, visits and events in school.
- Allows you to send and receive free messages to and from school via your mobile device.

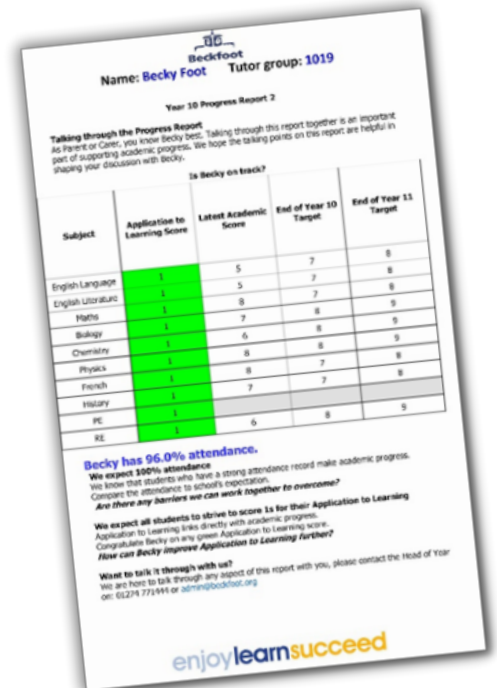


Class Charts is our main method of communicating important information home. Please ensure you have access.

Progress reports

We will send a Progress Report home three times per year. It gives information about your child's attendance, their punctuality, their Application to Learning for each subject, and their progress.

Please talk through each progress report with your child and ensure you have read this before Parent's Evening, where you can discuss any questions with your child's teachers.



Beckfoot website and social media

We provide lots of information including news and regular updates on our school website and through social media sites: Twitter, Facebook and Instagram.

Our website is: www.beckfoot.org

Our Twitter page is: @BeckfootSchool

Our Facebook page is: @Beckfoot School

Our Instagram page is: @Beckfoot School



Positive Learning Strategy

Rewarding the Beckfoot Six Ps



AT BECKFOOT, WE REWARD...



At Beckfoot School, we are keen to reward to reward our students who demonstrate they are meeting the Beckfoot Six Ps.

Here are examples of rewards at Beckfoot:

- Positive notes / comments on Class Charts: Teachers and support staff record positive comments on Class Charts to recognise when a student does something special in lesson.
- Texts home - Every week students who achieve all ATL1s for their lessons will get a positive text home. Teachers, support staff and the Leadership Team may also send personalised well-done messages and acknowledgement texts.
- Attendance trophy (KS3) - The year team will visit tutor groups weekly and award a top tutor group prize.
- End of Year Assemblies - Celebration of achievement in the year group within and beyond the curriculum.
- Red Carpet Events (all years) - This happen twice a year. Students who qualify for the event will choose a reward (Film, Gaming, Extra Sport or Art classes). They will receive a ticket for their chosen reward.
- End of Year Trips - This is a reward trip in June.
- Prom and Flamingo Land (Year 11) - As an extra special reward for Year 11s and in the run up to their exams, Year 11 are invited to attend an end of year prom at the Mercure Hotel in Bingley followed by a trip to theme park the following day.



The Beckfoot Positive Learning Strategy

Our Expectations: The Beckfoot Six Ps

- Arrive to school on time
- Arrive to lessons on time
- Aim for 100% attendance



- Ready to learn
- Correct uniform, lanyard and equipment
- Independent Learning



- Show respect and acceptance:
- In the classroom
- Around school
- In the local community



- Have a 'can-do' attitude
- Look after each other
- Be resilient
- Speak out for others



- Pride in my work
- Pride in my progress
- Pride in the school environment (no litter or chewing gum)



- Be focused and on task
- Seek out learning opportunities



In My Lessons

	Attitude to Learning	Beckfoot Learner: What it means for me	Beckfoot Teacher: PLS steps
ATL 1	I am <u>consistently</u> meeting the Beckfoot Six Ps in all that I do.	<ul style="list-style-type: none"> ♦ I will make good progress ♦ I will <u>receive 20 reward points</u> ♦ I will receive positive messages via Class Charts ♦ I will access rewards, Red Carpet events and celebration trips 	<ul style="list-style-type: none"> ♦ Take the register ♦ All students start on ATL 1 ♦ Optional Class Charts comment
ATL 2	I have demonstrated a desire to improve. I have participated and worked well. I show respect and acceptance. However, my ATL does <u>not fully meet</u> the Beckfoot Six Ps.	<ul style="list-style-type: none"> ♦ I will <u>receive 0 reward points</u> ♦ I will work to keep my ATL 2 ♦ I will have a chance to correct my behaviour to meet the Beckfoot Six Ps 	<ul style="list-style-type: none"> ♦ ATL changed on SIMS register ♦ Verbal reason given ♦ Late to lesson - click Class Charts icon and add minutes late ♦ Lack of home learning - click Class Charts icon ♦ Phone visible - click Class Charts icon, confiscate phone and pass to Year Team
ATL 3	I have <u>repeatedly</u> (more than once) demonstrated ATL that does <u>not fully meet</u> the Beckfoot Six Ps. I have <u>challenged</u> staff instructions.	<ul style="list-style-type: none"> ♦ I will <u>lose 10 reward points</u> ♦ Two ATL 3 in a week = 30min HoY after-school detention ♦ Four ATL 3 in a week = x2 30min HoY after-school detentions ♦ Six ATL 3 in a week = 60 minute Leadership Team after school detention ♦ Parental/carers meeting for persistent offences 	<ul style="list-style-type: none"> ♦ ATL changed on SIMS register ♦ Click ATL3 icon on Class Charts with comment and 'P' reference
ATL 4	I have <u>refused</u> to follow staff instructions. I have <u>repeatedly</u> <u>disrupted</u> the learning. I have exhibited <u>dangerous</u> or <u>abusive</u> behaviour.	<ul style="list-style-type: none"> ♦ I will <u>lose 20 reward points</u> ♦ I will spend time in Isolation and lose my social time ♦ My parents/carers will be contacted ♦ Persistent 4s will result in a parental/carers meeting, time out at another school and possible suspension 	<ul style="list-style-type: none"> ♦ On Call (removed from lesson) ♦ ATL changed on register ♦ Click ATL4 icon on Class Charts with comment



The Beckfoot Positive Learning Strategy

Our Expectations: The Beckfoot Six Ps

- Arrive to school on time
- Arrive to lessons on time
- Aim for 100% attendance



- Ready to learn
- Correct uniform, lanyard and equipment
- Independent Learning booklet



- Show respect and acceptance:
 - In the classroom
 - Around school
 - In the local community



- Have a 'can-do' attitude
- Look after each other
- Be resilient
- Speak out for others



- Pride in my work
- Pride in my progress
- Pride in the school environment (no litter or chewing gum)



- Be focused and on task
- Seek out learning opportunities



In My Community

CODE	COMMUNITY POINTS	REWARDS/CONSEQUENCES
C1	Helping in the community, charity work, outstanding student leadership, extra-curricular events, excellent citizen, going the extra mile, half-termly attendance award, half-termly ATL award	Additional reward points (20 reward points) Note on Class Charts Text message home/email home/phone call home Additional reward events
C2	Lack of lanyard Lack of Independent Learning Booklet Late to school - once in a week Late to lesson - once in a week Incorrect uniform	One C2 in a week = break detention
C3	Persistent lateness to school (more than once in a week) Persistent lateness to lessons (more than once in a week) Persistent incorrect uniform Persistent failure to follow mobile phone rules Persistent lack of lanyard or Independent Learning Booklet Persistent failure to submit Home Learning Failure to attend 30 minute or break detention Challenging staff instructions Fighting - equally to blame Failure to collect lanyard sticker or Independent Learning Booklet Selling food or drinks Internal truancy Chewing gum Inappropriate language or behaviour Out of bounds	After school detention for each occurrence Lose 10 reward points Lose 10 reward points One C3 in a week = 30min HoY after-school detention Two C3s in a week = 2 x 30min HoY after-school detentions Three C3s in a week = 60 min Leadership Team after school detention Parental/carers meeting for persistent offences Comment on Class Charts
C4	Persistent poor behaviour Persistent refusal to follow staff instructions/total defiance Disrespectful or derogatory language/behaviour against protected characteristics Dangerous behaviour Fighting - equally to blame (serious) Theft/vandalism Failure to attend or successfully complete Leadership Team detention Improper use of technology External truancy	Lose 20 reward points Isolation and loss of social time Parents/carers will be contacted Persistent C4s will result in a parental meeting, time out at another school and possible suspension External agencies may be contacted Comment on Class Charts
C5	Abuse to students and/or staff (biphobia, disablism, homophobia, racism, sexism, sexualised language, transphobia) Spitting with malicious intent Unprovoked assault Enabling trespassing Throwing an item over balcony Possession of cigarettes/vapes/lighters on site Persistent breach of school rules Persistent vandalism Possession of a dangerous item or illegal substance Serious misuse of technology Persistent abuse to students and/or staff - bullying	Lose 50 reward points Time out at another school Suspension from school (including a risk of permanent exclusion) Parents/carers will be contacted and a readmittance meeting will take place Comment on Class Charts External agencies may be contacted

Our Expectations: The Beckfoot Six Ps



In My PE Lessons

Attitude to learning		Beckfoot Learner: What it means for me	Beckfoot Teacher: PLS Steps
ATL 1	I have my <u>full</u> PE kit, ready to participate in the lesson. I am <u>consistently meeting</u> the Beckfoot Six P's in all that I do.	<ul style="list-style-type: none"> I will make good progress I will receive 20 reward points I will receive positive messages via class charts I will access rewards, Red Carpet events and celebration trips. 	Take the register All students start on ATL 1 Optional class charts comment
ATL 2	I have demonstrated a desire to improve. I have participated and worked well. However, my ATL does <u>not fully meet</u> the Beckfoot Six P's.	<ul style="list-style-type: none"> I will receive 0 reward points I will work to keep my ATL 2 I will have a chance to correct my behaviour to meet the Beckfoot Six P's 	ATL changed on the register Verbal reason given
ATL 3	I have forgotten 1 or more items of PE kit. I have not removed all jewellery I have <u>repeatedly</u> (more than once) demonstrated ATL that does <u>not fully meet</u> the Beckfoot Six Ps. I have challenged staff instructions.	<ul style="list-style-type: none"> I will lose 10 rewards points I <u>have</u> borrowed spare kit I will not be able to practically participate in lesson (jewellery) Parents will be notified straight away via class charts. After school detention for persistently forgetting items of kit (3 or more times in a half term) 	ATL changed on register Click ATL3 icon on class charts with comment and 'p' reference
ATL 4	I have <u>refused</u> to follow staff instructions. I have <u>refused</u> to borrow spare kit. I have <u>refused</u> to remove jewellery or tie hair back. I have <u>repeatedly disrupted</u> learning. I have exhibited <u>dangerous</u> or <u>abusive</u> behaviour.	<ul style="list-style-type: none"> I will lose 20 reward points. I will spend time in isolation and lose my social time. My parents/carers will be contacted Persistent 4's will result in parent/carer meeting, time out in another school and possible suspension. 	On call (removed from lesson) ATL changed on register Click ATL4 icon on class charts with comment

*Failure to remove ALL jewellery will mean you are unable to participate in the PE lesson practically.

*Notes must be provided for injuries, stating level of participation permitted and PE kit must still be worn in lesson.

*If PE Kit is lost or damaged a note must be provided and students will be expected to borrow spare kit.

School Calendar for 2024 - 2025



September						October						November						December					
	M	T	W	T	F		M	T	W	T	F		M	T	W	T	F		M	T	W	T	F
W1	2	3	4	5	6	W1		1	2	3	4	W1					1	W1	2	3	4	5	6
W2	9	10	11	12	13	W2	7	8	9	10	11	W2	4	5	6	7	8	W2	9	10	11	12	13
W1	16	17	18	19	20	W1	14	15	16	17	18	W1	11	12	13	14	15	W1	16	17	18	19	20
W2	23	24	25	26	27	W2	21	22	23	24	25	W1	18	19	20	21	22		23	24	25	26	27
W1	30						28	29	30	31		W2	25	26	27	28	29		30	31			
January						February						March						April					
	M	T	W	T	F		M	T	W	T	F		M	T	W	T	F		M	T	W	T	F
W2			1	2	3	W2						W1	3	4	5	6	7	W1		1	2	3	4
W1	6	7	8	9	10	W1	3	4	5	6	7	W2	10	11	12	13	14		7	8	9	10	11
W2	13	14	15	16	17	W2	10	11	12	13	14	W1	17	18	19	20	21		14	15	16	17	18
W1	20	21	22	23	24	W1	17	18	19	20	21	W2	24	25	26	27	28	W2	21	22	23	24	25
W2	27	28	29	30	31	W2	24	25	26	27	28	W1	31 *					W1	28	29	30		
May						June						July						August					
	M	T	W	T	F		M	T	W	T	F		M	T	W	T	F		M	T	W	T	F
W1				1	2	W1	2	3	4	5	6	W1		1	2	3	4						1
W2	5	6	7	8	9	W2	9	10	11	12	13	W2	7	8	9	10	11		4	5	6	7	8
W1	12	13	14	15	16	W1	16	17	18	19	20	EW	14	15	16	17	18		11	12	13	14	15
W2	19	20	21	22	23	W2	23	24	25	26	27	W1	21	22	23	24	25		18	19	20	21	22
	26	27	28	29	30	W1	30						28	29	30	31			25	26	27	28	29

Key									
Bank Holiday	Statutory	Staff Training Day	Data Days	Likely Eid Date	June-to-June start	Enrichment Week	Week 1	Week 2	
Students not in school	Students not in school	Students not in school	Students not in school	Students not in school	Students in school	Students in school	Students in school	Students in school	

Key dates in 2024/2025

- Wednesday 4 September 2024: Year 7, 11 & 12 return
- Thursday 5 September 2024: All other years return
- Monday 16 June 2025: Start of the new academic year (known as 'June-to-June')
- Friday 23 July 2025: Close for the summer

Days students are not in school throughout 2024/2025

- Monday 2 September 2024: training day
- Tuesday 3 September 2024: training day
- Thursday 28 November 2024: data day
- Friday 29 November 2024: training day
- Friday 21 March 2025: data day
- Monday 31 March 2025: likely to be Eid
- Friday 13 June 2025: data day

The new school year starts from June, with students accessing learning in their new year group shortly after the Spring Bank Holiday.

Timetable

We recommend you arrive at school for 8:20am for a prompt start at 8:30am. Our day finishes at 3:00pm.

We have five subject lessons a day, a tutor time (or assembly) every day and one morning break and a lunchtime.

Student timetables are a two weekly cycle. Below is an example of a timetable of one of the two weeks.

Beckfoot	MONDAY	TUESDAY	WEDNESDAY	THURSDAY	FRIDAY
Period 1 8:30am - 9:30am	DT HCD DT10	English LAA E13	History AHO H8	French GLH L5	DT GAW DT9
Period 2 9:30am - 10:30am	PE KEH Sports Dept	Maths FLI M7	Geography LAU H12	Perf-Arts EMT ED1	English ACT E13
Break 10:30am - 10:55am					
Tutor Time 10:55am - 11:20am	Tutor Time THH CA2	Tutor Time THH CA2	Tutor Time THH CA2	Tutor Time THH CA2	Y7 Assembly THH CA2
Period 3 11:20am - 12:20pm	Maths FLI M7	Science SLO S7	Comp Science TCS M14	Maths FLI M7	PE KEH Sports Dept
Lunch 12:20pm - 1:00pm					
Period 4 1:00pm - 2:00pm	English LAA E13	History AHO H8	English LAA E13	RE HCO H7	French GLH L5
Period 5 2:00pm - 3:00pm	Science SLO S7	Music MUS CM1	Art RWS CA4	Science SLO S7	Maths FLI M7

Curriculum and Tutoring

Students have 25 hours of learning a week across a broad range of subjects.

We work in partnership with our Primary colleagues to ensure that your child builds on the excellent learning that they have done in Years 5 and 6.

At Key Stage 3 (Years 7, 8 and 9) all students study the following subjects:

- English and Literacy
- Maths and Numeracy
- Science
- Geography
- History
- RE
- French or German
- Computer Science
- Music
- Art
- Design and Technology
- Drama and Dance
- PE



Wider Learning days

During our Wider Learning days (when we suspend the normal curriculum for the day), students are involved in subject based projects and wider PSHCE or subject linked activities. Careers exposure is important for students in Years 7 and 8 to get them thinking about their long-term future and ambitions.

Tutoring

Tutor time takes place between 10:55am - 11:20am equivalent to over 2 hours per week.

- Each tutor session is delivered by a teaching member of staff in a fixed classroom.
- Structured sessions include Time4Tutees, Assembly, PSHCE, Literacy/Numeracy, and Oracy/Metacognition
- Assemblies: Covers personal development themes linked to SMSC, RSE and Current Affairs. These are delivered by staff, students and external speakers.
- Oracy: Supports students in becoming confident communicators.
- Literacy: Promotes core literacy skills and creative writing skills
- Numeracy: Strengthens the fluency in key numeracy skills.
- Metacognition: Equips students with the skills and confidence to take ownership of their own learning.
- Time4Tutees: This session is a once a term meeting, one-to-one with tutors, to discuss four key areas of their school journey; Attendance, Attitude to Learning, Home Learning and Extra-Curricular participation.
- PSHCE: These cover topics that include Living in the wider world, Health and Wellbeing, and Relationships.

Research suggests Home Learning helps secondary students to make much more progress than classroom learning alone. In order to make the most of this, we have developed an evidence-informed approach to Home Learning that incorporates Homework Assignments, Independent Learning Booklets and Class Charts

Homework Assignments

Your child will be set regular homework assignments by their class teachers. These will have a clear deadline and will be designed to extend and deepen your child's understanding of a particular topic, give them an opportunity to practice key skills within a subject, or revise and prepare for assessments and exams. Details of the Home Learning your child should be doing each week are available through the Class Charts app.

Independent Learning Booklets

All students must complete at least 20 minutes per day of Independent Learning, (spread across all their subjects) using their Knowledge Organisers. Each half term, your child will be issued an independent learning booklet with all the Knowledge Organisers for that half term, plus some activities to complete at their own pace. These activities are called 'Quiz It, Link It, Map It, Shrink It'. The booklets also contain information on how to support your child with Homework, Revision, and other evidence-informed learning strategies. The booklet is the student's responsibility.

Class Charts

Class Charts is an app/website that allows us to set and manage homework assignments, communicate with families, and much more. All homework is set by teachers using Class Charts, and you and your child will get real time notifications of when assignments are set, when they are submitted, and any deadlines that are upcoming or missed. This system helps students organise their workload and meet deadlines. You can also use Class Charts to access the same overview. Further information about how to use Class Charts is available on our website, and in your child's Independent Learning Booklet.

Supporting your child with Home Learning

You don't need to be an expert in a particular subject to help your child succeed. All they need is time and enthusiasm and then the learning will take care of itself. Here are some suggestions that may help get things going:

- Ask your child questions about their Home Learning
- Praise and encourage your child's effort with Home Learning
- Watch the instructional videos on our website
- Help keep a Home Learning routine for your child, including checking Class Charts
- Encourage your child to use the after-school Home Learning Hub/Independent Study Group
- Communicate any issues with us using the Independent Learning Booklet, Email, or Class Charts.

Extra-Curricular opportunities

We are committed to providing as many enrichment activities as possible for our students. Our aim is to offer activities and enrichment opportunities that compliment and build upon that offered within the curriculum experience. Students and parents are regularly informed of the range of enrichment opportunities available. Here is a taster of some of the activities on offer:

SPA (Sports and Performing Arts)

Our programme of activities runs across tutor and break time to allow students to access activities in both subject areas, including learning to play a wide range of instruments and playing different sports. Students may sign up to take part in up to two activities each week.

Out of school trips and enrichment experiences

These trips and enrichment activities are run throughout the year and can range from residential trips within the UK and beyond, subject-specific trips as well as reward trips. They are co-ordinated via the Student Facilities Office (SFO). We will let you know about them via the Class Charts App. Payments are made using ParentPay.

Enrichment Week

This is final week of the school year before students break up for the summer break. It is a week off timetable where students in Year 7, 8 and 9 take part in an activity of their choice.

The EW booklet is issued in November with details of all the activities, ranging from residential trips in the UK and abroad, to local visits, as well as exciting in-house activities. Cost of the trips vary, with free in-house activities available to all.

BECKFOOT P.E. EXTRA-CURRICULAR
Summer Schedule 2022-23

	SPA (10.30am - 11.15am)				AFTER SCHOOL (3pm - 4.15pm)			
	COURTS	FITNESS SUITE	ASTRO	FIELDS	ASTRO	FITNESS SUITE	COURTS	SCHOOL HALL
MON		Girls' Fitness Years 9-13 Miss Holmes	Softball Years 9-13 Mr Lavel	Athletics Years 8 & 9 Mrs Lavel				
TUE			Rounders Years 7 & 8 Mrs Lavel	Rounders Years 11-13 Miss Lancashire	Boys' Cricket Years 7 & 8 Mr Awan			Athletics All years Mr Taylor, S. Mr Bentley
WED	Tennis Years 7 & 8 Mr Taylor		Softball Years 8 & 9 Mr Awan	Athletics Year 7 Mr Lavel	Girls' Cricket All years High			
THU	Tennis Year 9-13 Mr Awan							
FRI								

BECKFOOT CREATIVITY EXTRA-CURRICULAR
Winter Schedule 2022-23

	SPA (10.30am - 11.15am)		AFTER SCHOOL (3pm - 4.15pm)		MUSIC		ART / DT		OTHER	
	PERFORMING ARTS	MUSIC	PERFORMING ARTS	MUSIC	ART / DT	OTHER	ART / DT	OTHER	ART / DT	OTHER
MON	Swire Club All years Mr Taylor	Swire Club All years Mr Taylor	Swire Club All years Mr Taylor	Swire Club All years Mr Taylor	Swire Club All years Mr Taylor	Swire Club All years Mr Taylor	Swire Club All years Mr Taylor	Swire Club All years Mr Taylor	Swire Club All years Mr Taylor	Swire Club All years Mr Taylor
TUE	Swire Club All years Mr Taylor	Swire Club All years Mr Taylor	Swire Club All years Mr Taylor	Swire Club All years Mr Taylor	Swire Club All years Mr Taylor	Swire Club All years Mr Taylor	Swire Club All years Mr Taylor	Swire Club All years Mr Taylor	Swire Club All years Mr Taylor	Swire Club All years Mr Taylor
WED	Swire Club All years Mr Taylor	Swire Club All years Mr Taylor	Swire Club All years Mr Taylor	Swire Club All years Mr Taylor	Swire Club All years Mr Taylor	Swire Club All years Mr Taylor	Swire Club All years Mr Taylor	Swire Club All years Mr Taylor	Swire Club All years Mr Taylor	Swire Club All years Mr Taylor
THU	Swire Club All years Mr Taylor	Swire Club All years Mr Taylor	Swire Club All years Mr Taylor	Swire Club All years Mr Taylor	Swire Club All years Mr Taylor	Swire Club All years Mr Taylor	Swire Club All years Mr Taylor	Swire Club All years Mr Taylor	Swire Club All years Mr Taylor	Swire Club All years Mr Taylor
FRI	Swire Club All years Mr Taylor	Swire Club All years Mr Taylor	Swire Club All years Mr Taylor	Swire Club All years Mr Taylor	Swire Club All years Mr Taylor	Swire Club All years Mr Taylor	Swire Club All years Mr Taylor	Swire Club All years Mr Taylor	Swire Club All years Mr Taylor	Swire Club All years Mr Taylor



What is Beckfoot University?

Beckfoot University is a really exciting Year 7 initiative that we have invested in at Beckfoot. The aims of the programme are to:

- Raise aspiration, self-esteem and confidence
- Encourage curiosity and a love of learning
- Enhance motivation and build resilience
- Introduce children to new life experiences
- Offer progression in learning and personal skills development

Passport to Learning

Each student will be given a passport which is theirs to keep for the year. Students take their passport to extra-curricular events and learning experiences, both in and out of school, and for every hour they complete, they will receive a stamp. Passports are collected by tutors at the end of each term for accreditation.

Activities might include; SPA, afterschool clubs, museums, libraries, sports clubs, tourist destinations, volunteer work and any other experiences that enhance learning. The amount of hours accredited over the year will build towards certificates; the more hours, the higher the award. For those that go above and beyond, additional recognition will be awarded!

Graduation event

If a student completes 30 hours of accredited additional learning experiences they will attend a graduate event in June where the students will wear university hats. We also have key-note speakers and a certificate ceremony.

How can you support this initiative?

At Beckfoot we believe that Beckfoot University complements the Beckfoot learner skills of independence, creativity, being inquisitive and aspirational. We hope that families help support this initiative by encouraging your child to embrace new experiences, take their passports with them to additional learning experiences for accreditation, return them to school and celebrate their achievement with us by attending the graduation ceremony.



Travel to and from school

Students must be positive ambassadors for Beckfoot when travelling to and from school. They are expected to behave in a sensible, mature manner on all forms of transport. This means all school services and also the buses and trains used by the general public. We aim to ensure that everyone travelling on school transport is safe and gets to and from school on time.

School buses

Generally, buses are reasonably on time, but because of congestion or accidents, they are sometimes late. Both the school and the bus companies are keen to get students home safely and on time, therefore a replacement service is normally provided as soon as possible and students may have to wait for its arrival. Students will be required to apply for a 'Priority Photocard' to use the school bus service for the academic year to ensure that the WYCA plan correct routes for our students.

All students travelling by a school service bus have a Priority Photocard (a school bus travel card). Public bus services do not. There is no cost associated with this. To apply, please click the following link: https://metro.flexiroute.net/app_form_new_secondary.html

The school buses from September 2023 are:

- BF1: Wilsden Post Office
- BF2: Keighley Road
- BF3: Greengates
- B50: Eldwick



If you are unsure which service to choose, please click this link:

<https://www.wymetro.com/your-school/a-z-school-finder/b/beckfoot-school/> for the latest changes to school bus services.

Other bus services

Public service buses on Route 615/616, 662 & 60 also pass near to Beckfoot School. There is no direct public bus service for students travelling from Eldwick & Gilstead, so use services 615/616 and then change to 662. We advise students to use the B50 school Bus Service for this route. Other public buses are Bingley (662 & 60), Keighley (662 & 60), Shipley (622 & 60), Saltaire (662 & 60), Greengates (60) or Bradford (662). Please contact Metroline7676 for further details or visit www.wymetro.com

Payment arrangements

Students can pay a cash fare on boarding the bus, which varies by distance, but is generally between £1.20 and £1.80 per single journey for students with an Under 16 or 16-18 Photocard. Please note that students without one of these Photocards will be required to pay the full adult fare. FirstDay and FirstWeek tickets are not valid. MCard and Metrocard passes are valid or they can purchase a weekly or monthly. Under 19 travel ticket at any Payzone or at a Bus Station Travel Centre.

Travel to and from school

Home to school travel

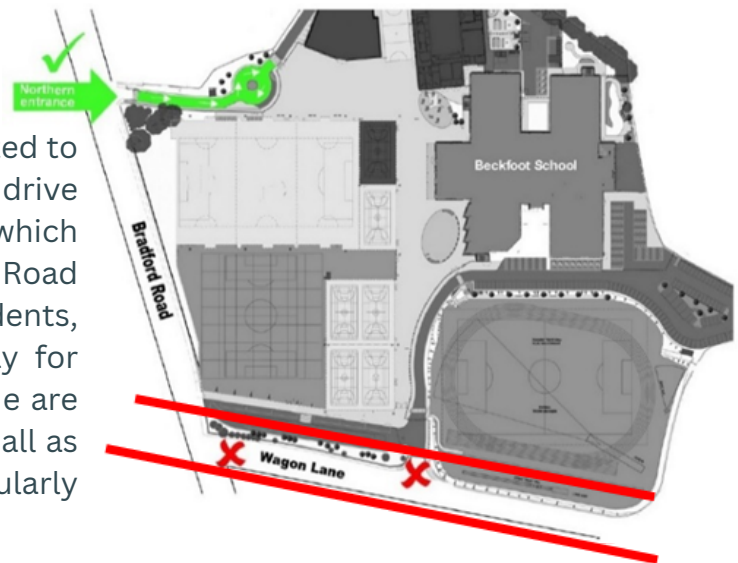
If you would like to apply for support with home-to-school travel arrangements, visit <https://bso.bradford.gov.uk/content/schooltravel>. If you qualify for support with home-to-school travel arrangements, you will be issued with one of the following:

- A zero-fare School Pass to use on public service buses and/or on any of the school bus services (except service B48); or
- A zero-fare Boarding Pass to use on service B48, if you live on the route of this service.

Please note the information contained here is correct at the time of publication (June 2023) and may be subject to change. Please check <https://www.wymetro.com/schools/> for up-to-date school transport information.

By car

The map on the right indicates where you are permitted to drop off or collect your child/children. Parents must drive onto the purpose built drop-off and turning circle which can be accessed via the northern, Bradford Road Entrance. Parents are asked, for the safety of students, not to use the front entrance driveway or bus bay for parking or turning. The school, police and fire brigade are anxious to avoid parents turning into Wagon Lane at all as parking restrictions are in place and the police regularly patrol and issue tickets for violations.



Our collective concern is that there is nowhere on Wagon Lane, or at the front entrance, where it is safe to turn around. Therefore, please do not use these areas to drop off or collect your child.

On foot

The A650 is a very busy road and great care must be taken if you stop to drop off or collect children. For safety reasons, students are advised to use public footpaths and designated walkways around the school site. To cross the busy A650 Bradford Road, students must use the puffin crossing.

By bicycle

There is a cycle store located by the turning circle and another by reception. Please ensure your child wears a cycle helmet, has a bike lock, and adheres to the Highway Code.

Dining and ParentPay

In secondary schools, the range of food on offer tends to be wider and more varied than in primary schools. This is because secondary schools must cater for children's changing and developing tastes and expectations during their teenage years. The dining room is likely to be bigger, busier and noisier than your child was used to at primary school, but there are staff and students available to support and reassure new students and to help them make healthy choices.

Catering at Beckfoot School is managed by Facilities Management, the Bradford Council Catering Service. Students can purchase food from the various outlets in the atrium before school, break and lunchtime.

Cashless catering / ParentPay

At Beckfoot, all payments for food or drink are made via a cashless card. Money can be added to the card by putting cash into the 'Reval' machines in school.

You can also use an online payment system called ParentPay. It's simple, safe and convenient and your child no longer needs to bring cash into school. ParentPay is an online payment system for schools. It allows parents to pay quickly and securely for school meals, trips and activities, uniforms, music lessons and fees. You simply top-up your ParentPay account online by debit or credit card, or in cash through PayPoint stores. Your ParentPay balance can be used immediately to pay for any of your children's items at school using ParentPay. More information can be found at <https://www.parentpay.com/>

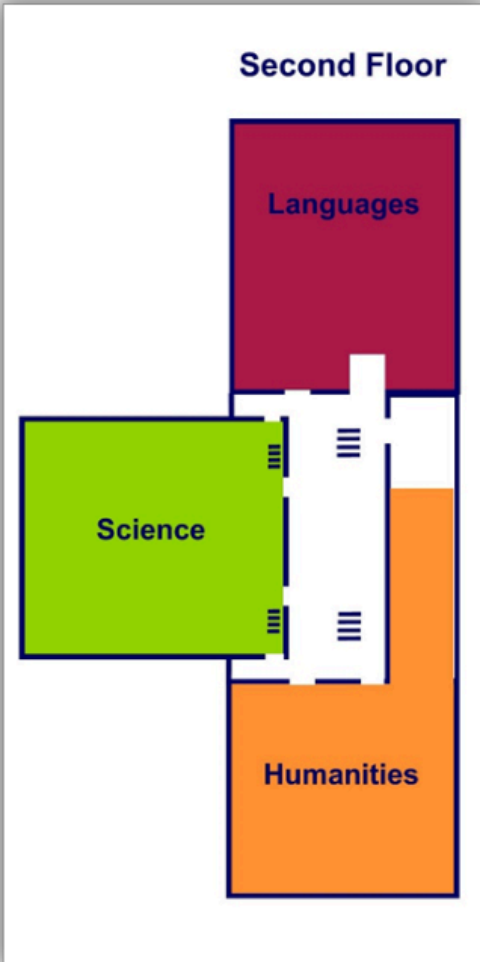
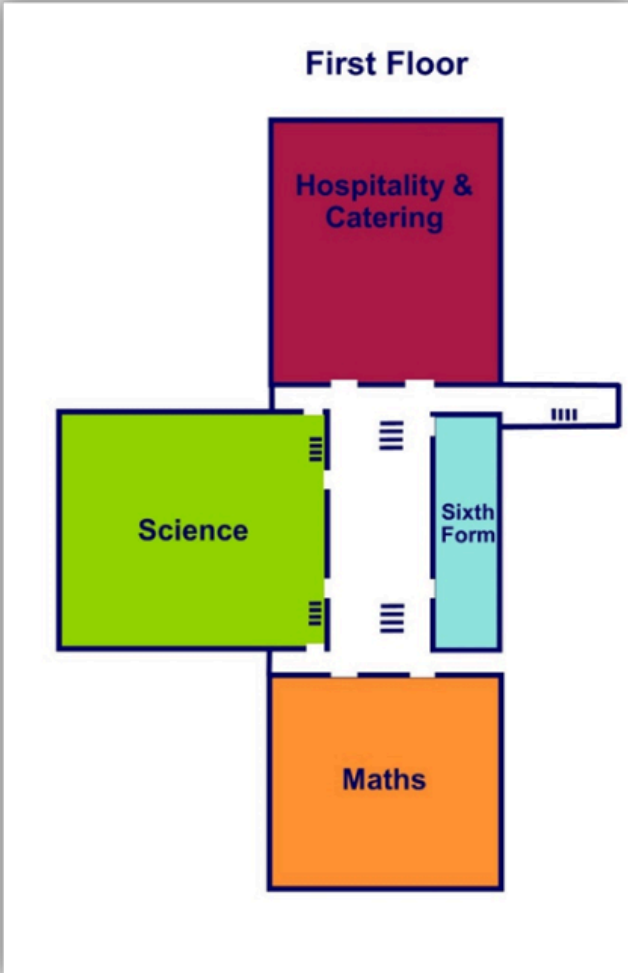
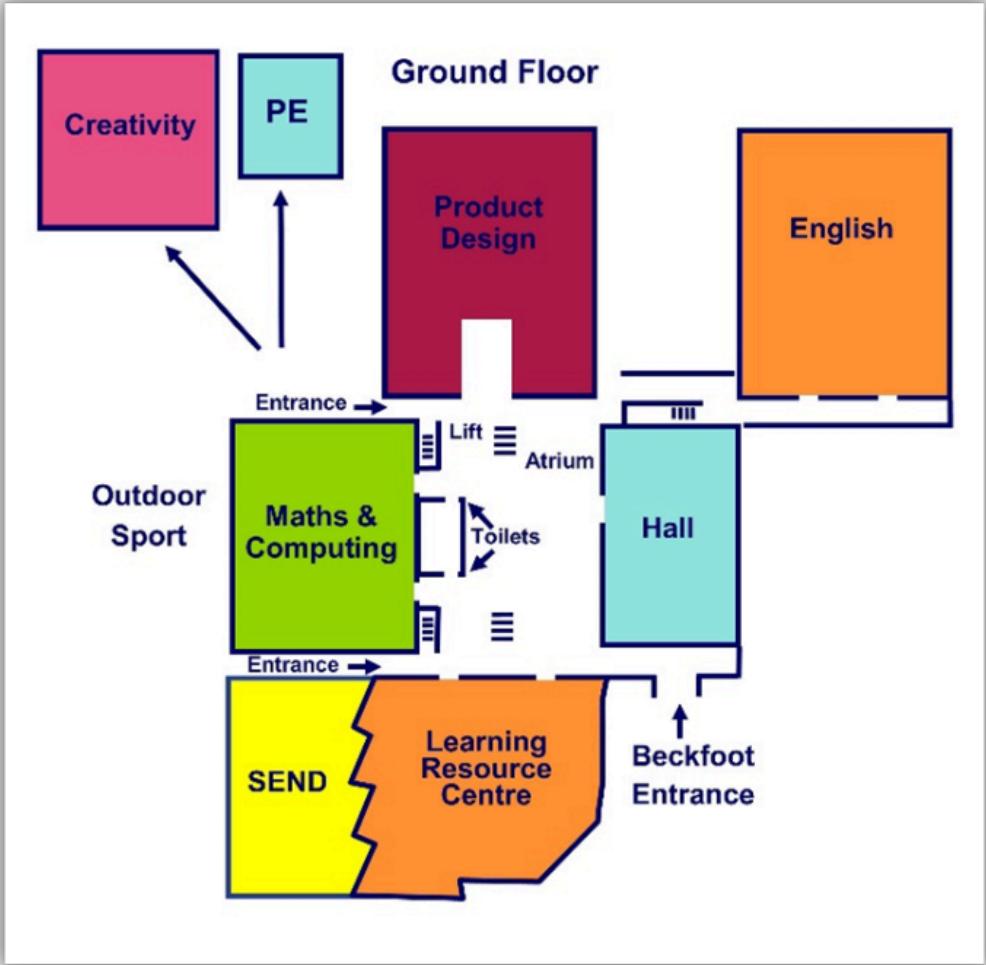
What are the benefits of ParentPay?

- ParentPay is easy-to-use and will offer you the freedom to make online payments whenever and wherever you like, 24 hours a day, 7 days a week.
- The technology used is of the highest internet security available ensuring that your money will reach school safely – offering you peace of mind and fully compliant with GDPR.
- Payments can be made by credit or debit card.
- Full payment histories and statements are available to you securely online at any time.
- Your child/children will not worry about losing money at school.
- ParentPay will soon be announcing a SmartPhone App to make payments even more convenient.

You will receive an invitation to activate a ParentPay account before September.



Map of the School





We look forward to you starting with us in September and if you have any questions before then, please email beckfoottransition@beckfoot.org

enjoylearnsucceed