

Local Anti-Bullying Protocol

This protocol is written in conjunction with the Beckfoot Trust Anti-Bullying Policy which is available on the Trust website: **Beckfoot Trust - Policies and Documents**

Beckfoot School is committed to the aims outlined in the Trust Anti-bullying policy and to providing a positive, and safe environment where pupils can learn to the best of their ability. We have a zero-tolerance approach to all forms of child-on-child abuse including sexual harassment or violence and bullying.

We will listen, taking all allegations of bullying seriously and deal with concerns or allegations of bullying promptly and efficiently. This protocol outlines our approach to prevent and tackle all forms of bullying.

The protocol has been adopted with the involvement of the whole school community.

Our Definition of Bullying

Bullying (including online) includes a range of abusive behaviour from an individual or group that is:

- Repeated
- Intended to hurt someone either physically or emotionally
- Often aimed at certain groups, for example because of race, religion, gender, or sexual orientation

Bullying can occur both in and out of school.

We believe that:

- Children and young people should never experience abuse of any kind
- We have a responsibility to promote the welfare of all children and young people, to keep them safe and to practise in a way that protects them
- Bullying is closely related to how we respect and recognise the value of diversity

We recognise that:

- Bullying causes real distress
- It can affect a person's health and development and, at the extreme, can cause significant harm. All children, regardless of age, disability, gender reassignment, race, religion or belief, sex, or sexual orientation, have the right to equal protection from all types of harm or abuse
- Everyone has a role to play in preventing all forms of bullying and putting a stop to bullying

Preventing Bullying

Our School will:

- Provide regular staff training on spotting signs and symptoms of all forms of bullying and how to respond to it
- Reinforce our anti-bullying message to pupils through our curriculum, Personal, Social, Health and Economic (PSHE) / RSE education and pastoral support
- Ensure families and members of the school community are aware of our approach to bullying and the role they have to support our aims

- Analyse data to ensure occurrences are rare and no patterns are emerging

To support this approach, we will specifically:

All

- Display posters and advice leaflets in communal and learning areas
- Provide safe spaces and confidential listening areas in designated pastoral areas and offices
- Provide updates on our website about work we are doing to prevent and tackle bullying
- Keep our anti-bullying approach high profile and reinforce through events such as antibullying week
- Support staff to promote positive relationships and recognise some members may be more vulnerable to bullying and its impact including children with SEND
- Review our actions to address any bullying at regular intervals to ensure the problem has been resolved for the long term
- Work with parents as part of our Home School Agreement
- Utilise support from external organisations and agencies
- Be proactive about seeking opportunities to learn and celebrate difference
- Increase and celebrate diversity within our staff and pupils
- Welcome new members to our school community
- Celebrate success and achievements of all in our school community

Secondary

- Provide assemblies led by pastoral leads, senior leaders and external speakers including cyber bullying updates for students to understand the risks of social networking sites, protecting themselves online and ways to report cyber-bullying.
- Involve pupils in policy writing and decision making, to ensure that they understand the school's approach and are clear about the part they play in preventing bullying.
- Ask children and young people's views on the extent and nature of bullying.
- Signpost pupils so they know how to express worries and anxieties about bullying.
- Make sure pupils are aware of the range of sanctions which may be applied against those engaging in bullying.
- Involve pupils in anti-bullying campaigns in schools and embedded messages in the wider school curriculum.
- Utilise pupil voice in providing pupil led education and support
- Publicise the details of internal support, as well as external helplines and websites.
- Offer support to any pupils who have been bullied and to those who are bullying to address the problems they have.

Reporting Bullying

In our school, children who are concerned or are experiencing bullying have been encouraged to talk to our staff including their Tutor, the Pastoral Team, and the Safeguarding Team. All concerns will be dealt with sensitively and effectively.

The following systems are also in place for pupils to raise concerns or self-refer:

- Communicating on a monitored email address – stop@beckfoot.org
- Student voice / survey
- Childline (see useful contacts below)

If parents/carers need to contact us about any concerns relating to their child(ren) or any other child(ren) they should initially contact the relevant Year Team.

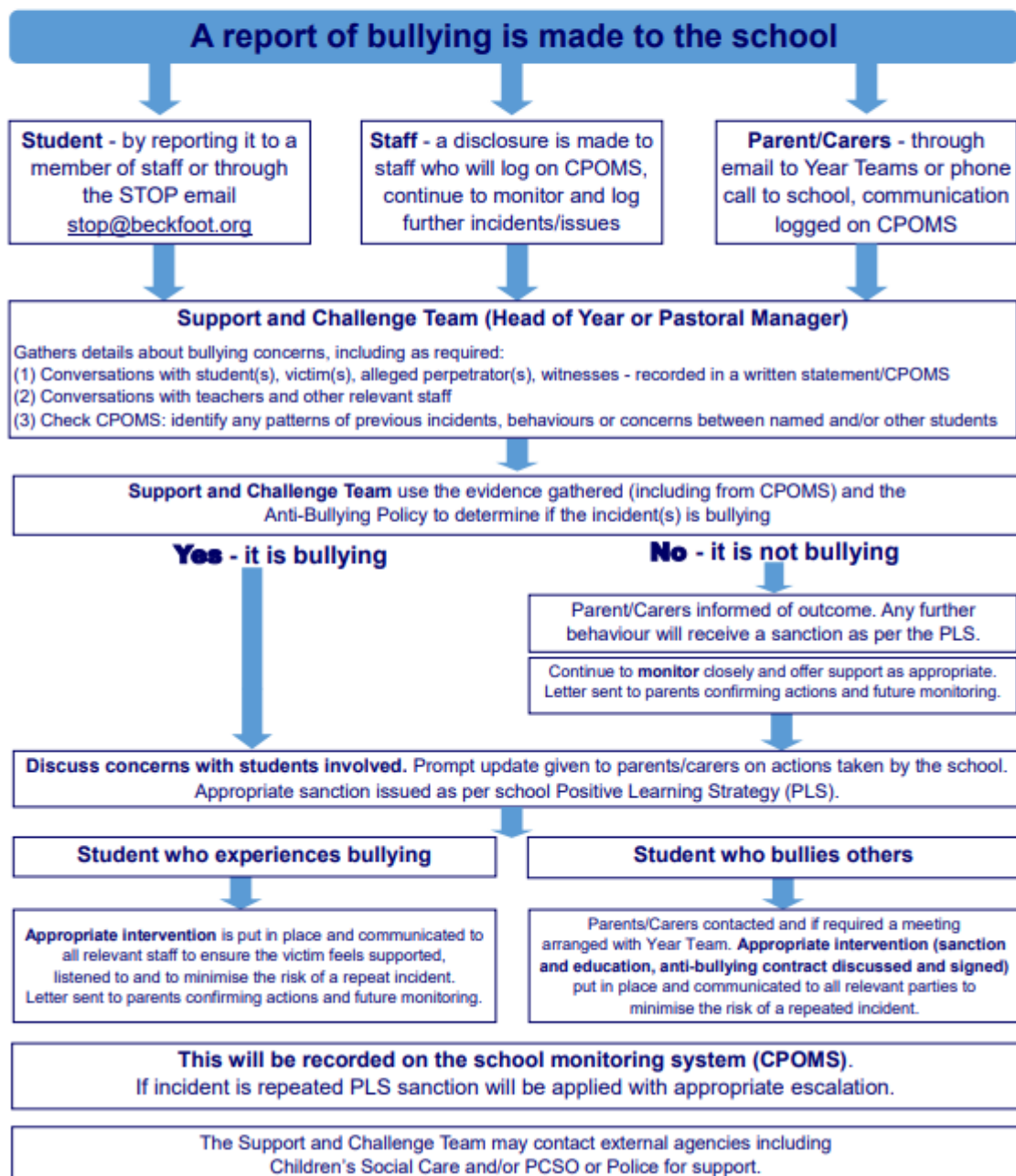
Responding to Bullying



Definition of Bullying: "Behaviour by an individual or group, repeated over time"

Bullying can include name calling, taunting, mocking, making offensive comments; kicking; hitting; taking belongings; producing offensive graffiti; gossiping; excluding people from groups and spreading hurtful and untruthful rumours. Bullying is recognised by the school as being a form of child-on-child abuse. It can be emotionally abusive and can cause severe and adverse effects on children's emotional development.

Dealing Effectively with Bullying Behaviour In or Out of School Procedures Flowchart



Supporting our Community

Role of Adults

- Follow the steps outlined in this local protocol which provides details of specific roles
- Work together to create and support an inclusive environment which promotes mutual respect and consideration for others
- Listen with an open mind to all concerns
- Be vigilant to bullying behaviours and challenge language or behaviour that does not uphold our values or protocol
- Teach children about how to know the signs of bullying and be a positive bystander / upstander
- Monitor children who have disclosed bullying closely
- Provide support to children who have been bullied, through:
 - Reassurance and pastoral support, building self-esteem and confidence
 - Contact with support organisations for specialist advice and guidance
 - Providing an appropriate intervention
 - Referral for counselling, where appropriate
- Provide support and work with children who have perpetrated bullying by:
 - Discussion about what happened and the need to change
 - Involving parents/carers to support changes to behaviour and attitude
 - Providing advice to parents about monitoring devices
 - Providing an appropriate intervention

Role of Pupils

- Follow the school rules
- Report instances of bullying, no matter how small
- Talk to an adult about any concerns or difficulties
- Make a note of any bullying or record any evidence such as screenshots
- Be positive bystanders if bullying is seen in our school
- Be active in our work to prevent bullying from occurring outlined above

Role of Families

- Engage with and feedback on school procedures to prevent and tackle anti-bullying in line with our Home School Agreement.
- Support our zero-tolerance approach to bullying when talking to your child/ren including addressing any issues beyond school that give rise to bullying
- Read our website with updates of our activities
- Report any worries to school
- Role model positive behaviour for children, both on and offline
- Raise concerns with school in an appropriate manner in line with our Complaints Policy

Monitoring and Review

- The school will regularly monitor and evaluate mechanisms to ensure that the policy and protocol is consistently applied.
- Any issues identified will be incorporated into the school's action planning.

- The protocol will be reviewed by the Headteacher with a senior member of staff in line with the Trust policy review every year.

Useful Support Organisations

- **Advisory Centre for Education (ACE):** <https://ace-ed.org.uk/about/contact>
- **Anti-Bullying Alliance:** <https://anti-bullyingalliance.org.uk/>
- **Child Exploitation and Online Protection:** <https://www.ceop.police.uk/safety-centre>
- **Childline:** <https://www.childline.org.uk/get-support/contacting-childline>
- **Children’s Legal Centre:** <https://www.childrenslegalcentre.com/>
- **Family Lives:** <https://www.familylives.org.uk/how-we-can-help/confidential-helpline>
- **KIDSCAPE Parents Advice Line:** <https://www.kidscape.org.uk/advice/parent-advice-line>
- **MindEd:** <https://www.minded.org.uk/>
- **NSPCC:** <https://www.nspcc.org.uk/>
- **PSHE Association:** <https://pshe-association.org.uk/>
- **Restorative Justice Council:** <https://restorativejustice.org.uk/>
- **The BIG Award:** www.bullyinginterventiongroup.co.uk/index.php
- **The Diana Award:** <https://diana-award.org.uk/>
- **Victim Support:** <https://www.victimsupport.org.uk/>
- **Young Carers:** <https://carers.org/>
- **Young Minds:** <https://www.youngminds.org.uk/>
- **Youth Access:** <https://www.youthaccess.org.uk/>

Cyberbullying

- **Childnet Online safety for young people:** <https://www.childnet.com/>
- **DfE Advice for parents and carers on cyberbullying:**
https://assets.publishing.service.gov.uk/government/uploads/system/uploads/attachment_data/file/444865/Advice_for_parents_on_cyberbullying.pdf
- **DfE Cyberbullying: Advice for headteachers and school staff:**
https://assets.publishing.service.gov.uk/government/uploads/system/uploads/attachment_data/file/1069987/Cyberbullying_Advice_for_Headteachers_and_School_Staff_121114.pdf
- **Internet Watch Foundation:** <https://www.iwf.org.uk/>
- **Think You Know, CEOP Education:** <https://www.thinkuknow.co.uk/>
- **UK Council for Child Internet Safety:** <https://www.gov.uk/government/groups/uk-council-for-child-internet-safety-ukccis>
- **UK Safer Internet Centre:** <https://saferinternet.org.uk/>

SEND

- **Changing Faces:** <https://www.changingfaces.org.uk/>
- **Mencap:** <https://www.mencap.org.uk/>
- **SEND code of practice: 0 to 25 years:** <https://www.gov.uk/government/publications/send-code-of-practice-0-to-25>

Race, Religion and Nationality

- **Anne Frank Trust:** <https://www.annefrank.org.uk/>
- **Educate against Hate:** <https://www.educateagainsthate.com/>
- **Kick it Out:** <https://www.kickitout.org/>

- **Report it:** <https://www.report-it.org.uk/>
- **Stop Hate:** <https://www.stophateuk.org/>
- **Show Racism the Red Card:** <https://www.srtrc.org/newsandevents/>
- **Tell Mama:** <https://tellmamauk.org/>

Sexual Harassment and Bullying

- **Anti-bullying Alliance: Advice for school staff and professionals about developing effective anti-bullying practice in relation to sexual bullying:** <https://anti-bullyingalliance.org.uk/tools-information/all-about-bullying/sexual-and-sexist-bullying/preventing-sexual-and-sexist>
- **Anti-bullying Alliance: Preventing and responding to Sexual Bullying:** <https://anti-bullyingalliance.org.uk/tools-information/all-about-bullying/sexual-and-sexist-bullying/responding-sexual-and-sexist>
- **Disrespect No Body:** <https://www.gov.uk/government/publications/disrespect-nobody-campaign-posters>
- **Ending Violence Against Women and Girls (EVAW)** <https://www.endviolenceagainstwomen.org.uk/>