



EW 12

Master Crafts





Today's activities

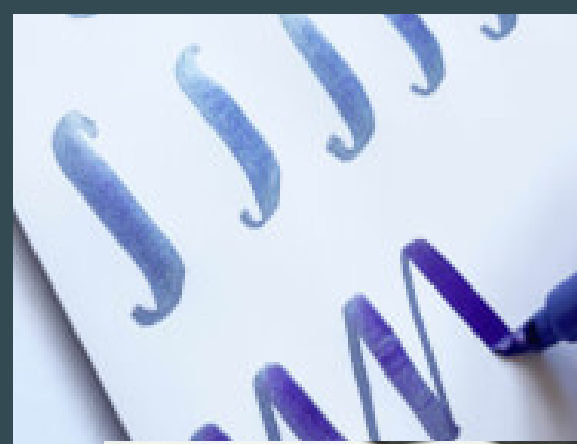
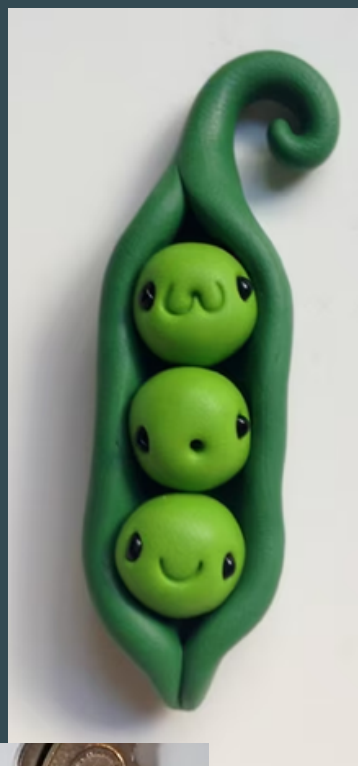
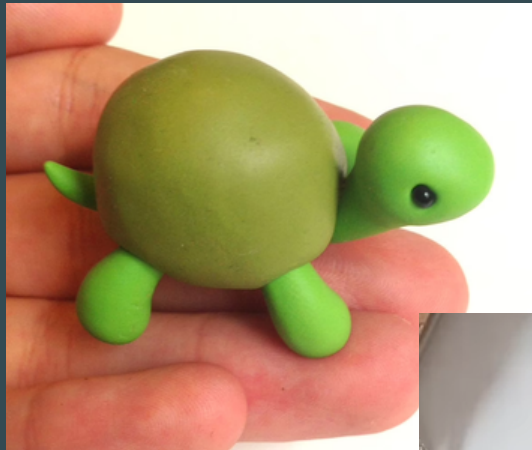


	MONDAY	TUESDAY	WEDNESDAY	THURSDAY	FRIDAY
START TIME	8:30am	8:30am	8:30am	8:30am	8:30am
RETURN TIME	2:45pm	2:45pm	2:45pm	2:45pm	12:20pm
LOCATION	DT13 & AP4 - in school	CA1 (morning) and DT13 (rest of day) - in school	DT2 & DT13 - in school	DT9 (morning) Then head to Bowling in Shipley (after break)	Beckfoot School
ACTIVITIES	Needle felting characters Fruit display designing Clay bead jewellery making	Wall Art - two different types Macrame keyrings Clay bead jewellery Origami	Fimo Characters Brush Lettering Silver ring making	Fruit display making Bowling	Usual lessons
FOOD	Usual school lunches available	Usual school lunches available	Usual school lunches available	Packed lunch required	Breakfast and break as usual.. Home for lunchtime
CLOTHING	Non-Uniform	Non-Uniform	Non-Uniform	Non-Uniform	School Uniform
TRAVEL	None	None	None	622 bus from Bingley to Shipley	School buses as usual (morning) and at 12:20pm in afternoon

Health & Safety rules



- ☀ Only enter rooms when told to do so by a member of staff.
- ☀ Keep your work area and floor area clear, with bags and coats out of the way or in the racks.
- ☀ Listen and follow teacher instructions, particularly about Health & Safety.
- ☀ Do not rush about or throw anything.
- ☀ Use tools, equipment and materials when instructed by a teacher, and in the way they modelled their use. If in doubt - ask.
- ☀ Never remove anything from classrooms.
- ☀ **ALL DANGEROUS/SHARP CRAFT TOOLS WILL BE COUNTED OUT AND COUNTED BACK IN BEFORE YOU LEAVE THE CLASSROOM.**
- ☀ Stand when doing practical work in food rooms or in workshops so you can move away quickly, if needed.
- ☀ One student uses equipment at a time.
- ☀ Wash your hands before preparing food, and before you leave the lesson.
- ☀ If you are scalded, burnt or a chemical splashes on your skin, wash the affected part at once with lots of water. Tell your teacher. Report any incidents.
- ☀ Report any faulty, damaged or missing equipment and spillages or breakages to your teacher.
- ☀ Respect yourself, each other and the classroom.



Make FIMO characters for key chains. Don't just copy these - be creative and unique! We will bake for 30 minutes and then Mod-Podge them this afternoon to finish them.

An example is shown here:

<https://www.youtube.com/watch?v=3DvzbzYNq0k>

8:30am - 10:30am
FIMO characters
BRUSH lettering
in DT13

Learn to write FANCY with brush lettering. We will practice first, before moving on to decorating our own notebook.



10:55am - 12:20pm

BEADED SILVER RING
MAKING

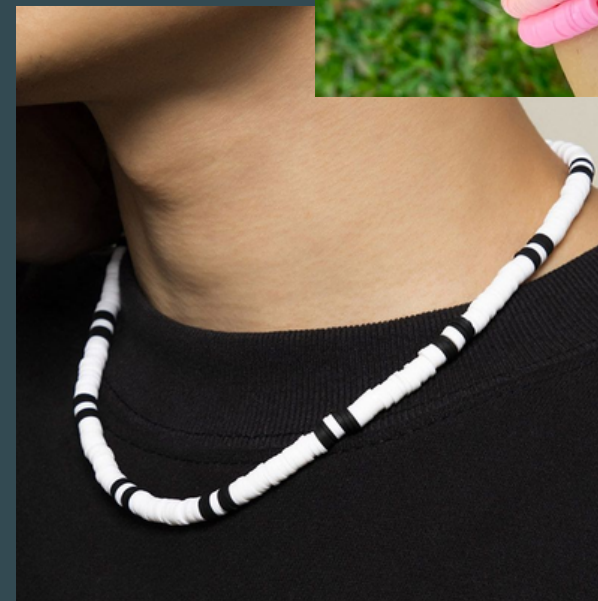
in DT2



- *No phones*
- *Respect*
- *Listen*
- *Concentrate*
- *Follow the H&S rules*



Chill and fold



1:50pm - 2:45pm
ORIGAMI
CLAY BEAD JEWELLERY
in DT13

Let's make on-trend jewellery from clay beads. Be creative. Make mulitple designs. This is a great mindful activity.