

# BECKFOOT SCHOOL



# Transition

# Year 7

# Get Ready for Beckfoot



enjoy learn **succeed**



# A Very Warm Welcome

Welcome to Beckfoot School. We are thrilled that you have chosen us to educate your child. I hope this guide provides you with all the information you need whilst also capturing the unique ethos that makes Beckfoot so special.

Our school motto, created by students, is **‘Enjoy - Learn - Succeed’**. We are totally student centred. We expect every Beckfoot learner to enjoy school, be successful academically and become self-determined, outward looking and selfless young adults. Our culture is celebratory and aspirational. We want each young person to make a valuable contribution and in doing so, we hold the highest expectations of them. We expect that they will be in school every day and on time; that they will demonstrate a remarkable attitude to learning by doing their best in every lesson and that they will utilise every opportunity provided to them throughout their school career. We will encourage and help them to demonstrate that they care for one other and the world around them.

Ofsted graded the school ‘outstanding’ in every category in 2014 and we achieved the World Class Quality Mark in 2016. Our aim is to continue to provide an outstanding example of truly great comprehensive education in this part of Bradford. We passionately believe that every young person has talent and it is the job of a great school to ensure that they fulfil it. Our curriculum has breadth, focuses on core skills and provides a route forward for every learner. We are extremely proud of the progress achieved for all groups of learners at all levels in recent years and our collective aim is to continue to build on this and be better year on year.

The key to our success is a team of staff who demonstrate absolute commitment to the vision and values of the school. Great teaching sits at the heart of all we do. Relationships matter. We only appoint teachers who relate well to young people, plan lessons and assess learning effectively so that we can guarantee that students feel valued, enjoy learning and make great progress. Alongside our teachers is an exceptionally talented group who form our Support and Administrative teams. They free teachers up to teach, allowing the school to continually move forward focused on our core business.

The relationship with our parents, community partners, primary feeder schools, colleges, universities and industry is fast evolving and will help to ensure the support every learner receives is first rate. We are hugely excited about our outstanding CEIAG (Careers Education Information, Advice and Guidance) programme and the opportunities that will bring to broaden horizons for our students.

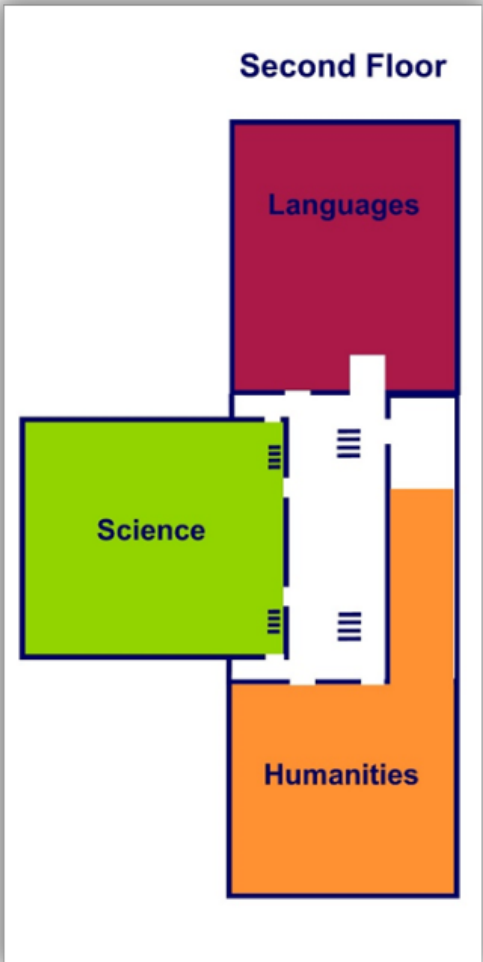
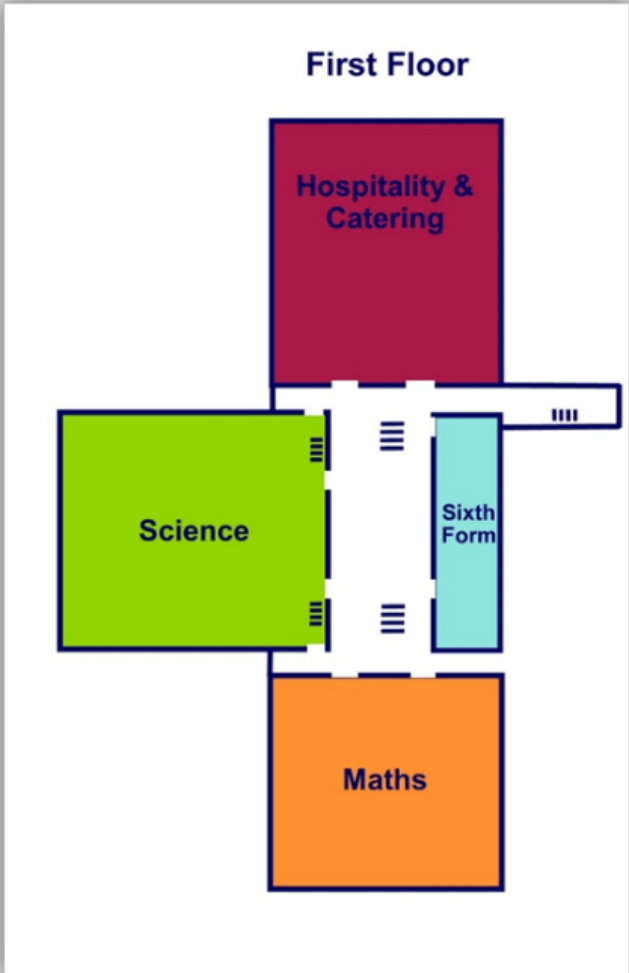
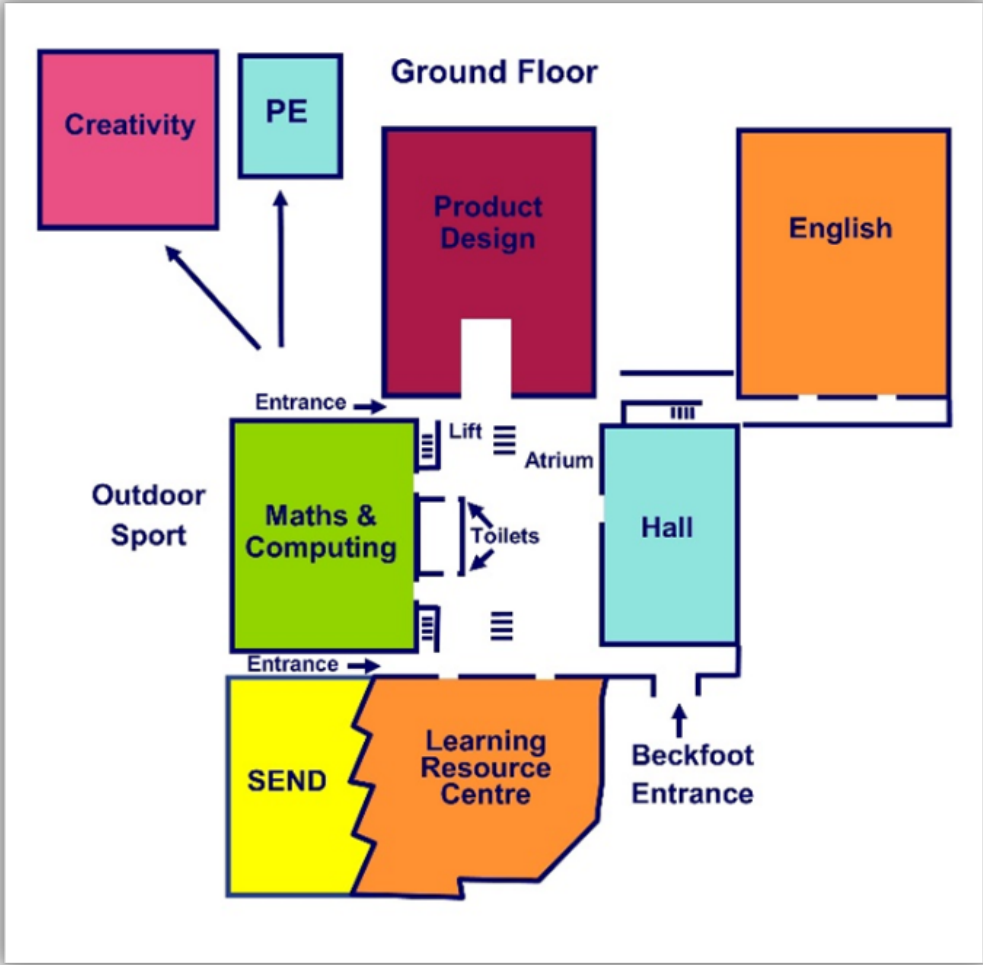
We ask for your full support in working with your child to meet our expectations and day-to-day procedures; it’s important. We want you to feel free to contact us at any time. We want to hear your views and will be very open to talking through any concerns you have.

Finally, we know this time can be a mixture of emotions for you and your child. As Headteacher, I want the best for every child as I would for my own and, collectively, we will work hard to ensure they are nurtured, feel safe and special. Your child will be supported to grow in confidence, feel they truly belong here and ultimately be successful as a result of being a Beckfooter.

**Simon Wade**  
Headteacher



# Map of the School



# Home/School Agreement

**As a world class learner, I embrace every opportunity to shape my development as a person, a future leader and a global citizen.**

- I attend every day, am on time to every lesson, wear my correct uniform and have my correct equipment.
- I work as hard as I can and strive to achieve 1s for my attitude to learning in all my lessons, taking great pride in the presentation of my work and keeping my Learning Planner neat and up to date.
- I treat everyone and everything in my school community with respect, and respond first time, every time.
- I am resilient, reflective and highly ambitious about what I can achieve at Beckfoot and in my future and I embrace all opportunities to prepare me for my learning and working life beyond Beckfoot.
- I meet my home learning deadlines, revise thoroughly for assessments and reflect on how to do even better next time.

**As a parent/carer, I am an active partner in my child's learning.**

- I ensure my child attends (target 98%) and is punctual, and we do not take family trips or holidays in term-time. I ensure my child is 'school ready' with the correct learning equipment and uniform and I attend Parents' Evening and other meetings to discuss my child's progress.
- I support Beckfoot's policies and practices, including those on behaviour and attitude to learning.
- I support my child's home learning and revision for exams by providing a suitable environment for them and checking their Learning Planner every week.
- I have the highest aspirations for my child, and encourage my child to embrace opportunities to shape, enrich and lead their personal development.
- I work in partnership with the school to ensure they fulfil their academic and social potential so that they are prepared for their life beyond Beckfoot.

**As a world class school we put students first, nurture their talent and prepare them as future leaders.**

- We keep our students safe; safeguarding every individual and checking attendance daily with home contact as necessary.
- We provide a remarkable learning environment with a curriculum that is challenging, inclusive and forward-thinking and teaching and learning that is engaging, exciting and inspiring. We always seek ways to innovate. We build confidence through recognising, rewarding and celebrating students' success in all its forms.
- We see every student as an individual, and personalise our support and tutoring accordingly, setting challenging targets and reviewing them regularly. We provide home learning and revision that is meaningful and impacts on knowledge and skills in readiness for qualifications.
- We provide enrichment activities that are varied, inclusive and fun, including leadership opportunities that prepare students for life beyond Beckfoot, for entering the world of work and forging a career.
- We communicate with parents/carers about their child's individual progress through the planner, their books and reports home, and provide opportunities to talk. We share any concerns with parents/carers about their child's individual attendance, behaviour or effort.



# Communicating with you

## Family Communication App

Our Family Communication App is Class Charts and it is available on IOS and Android and via the website. We will send an invitation to download the Family Communication App in September to Priority 1 contacts.

The App will provide you with school information, and individual information on your child/children.

The App:

- Allows you to view information and keep up to date with what's going on in school.
- Allows you to view key information about how your child is doing in school.
- Informs you about your child's activity, including school letters, attendance, visits and events in school.
- Allows you to send and receive free messages to and from school via your mobile device.

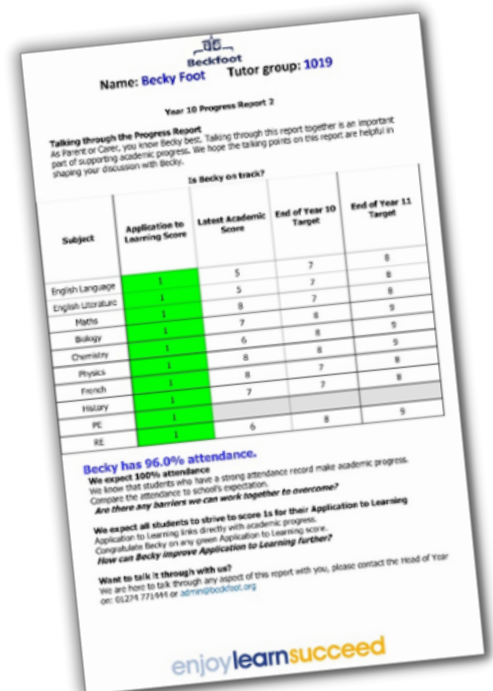


Class Charts is our main method of communicating important information home. Please ensure you have access.

## Progress reports

We will send a Progress Report home three times per year. It gives information about your child's attendance, their punctuality, their attitude to learning for each subject, and their progress.

Please talk through each progress report with your child and ensure you have read this before Parent's Evening, where you can discuss any questions with your child's teachers.



## Beckfoot website and social media

We provide lots of information including news and regular updates on our school website and through social media sites: Twitter, Facebook and Instagram.

Our website is: [www.beckfoot.org](http://www.beckfoot.org)

Our Twitter page is: @BeckfootSchool

Our Facebook page is: @Beckfoot School

Our Instagram page is: @Beckfoot School



# Attendance

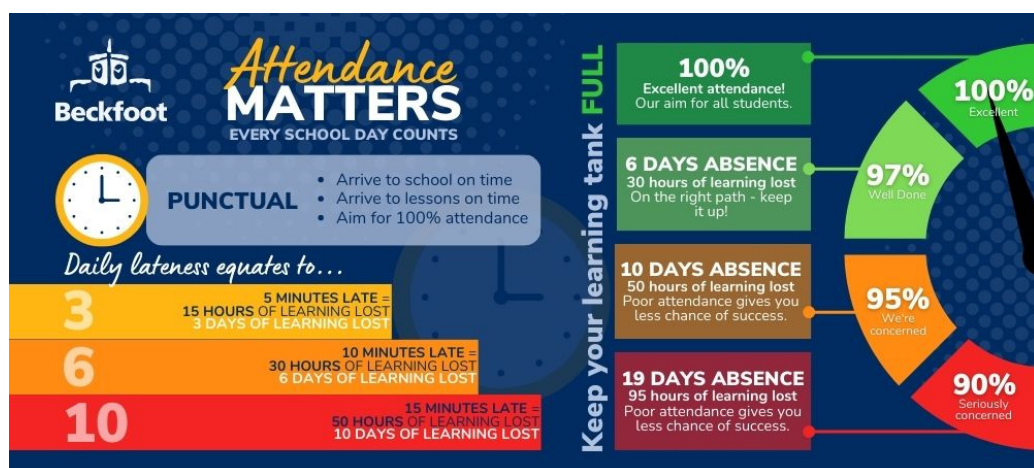
We want to ensure that all students receive an education which maximises opportunities to reach their potential. Promoting and supporting good attendance at school is essential to settling in, enjoying school, accessing school rewards, learning and succeeding. The school expects all students to aim for 100% attendance. An attendance level of under 90% is persistent absence and will initiate intervention by the school.

We understand that there are exceptional circumstances when levels of attendance may fall below 100% for reasons beyond the student and parent's control. That said these are very rare exceptions rather than the rule. According to NHS guidance, children do not require time off for: Colds; Cold sores; Conjunctivitis; Cough; Glandular fever, Hand, foot and mouth disease; Headache; Head lice; Sore throat; Threadworms; Tonsillitis; Warts and/or Verrucae. Please visit the Attendance section of the school website for further advice and information.

Should your child be too ill to attend school, please contact us on the first day of absence before 8:30am by Class Charts: 'Absence Messages' Email: [absence@beckfoot.org](mailto:absence@beckfoot.org) Phone: and press 1 to record your absence message.

## Punctuality

There is a significant link between punctuality and doing well at school. School starts promptly at 8.30am. Being 5 minutes late each day is equivalent to missing 3 days of school. In short, every minute in school matters!



## Medical appointments

Doctors and dentist appointments should be made outside of school time. If this is not possible your child should miss the least amount of school time as possible. If an appointment is mid-morning they should come to school before their appointment and, if they are well enough, return to school after the appointment. Medical evidence will need to be provided.

## Term time holidays

There are 13 weeks of holidays each academic year; we expect all parents/carers will take their family holidays whilst the school is closed.

## School closure

In the event of bad weather or an emergency we will post the latest information onto the school website. It is also possible to subscribe to the School Closure Email Alert Service on Bradford Schools Online here: <https://bsc.bradford.gov.uk/council/schools/alerts>

# School Calendar for 2023 - 2024



August 2024							September 2023							October 2023							November 2023												
Mon	Tue	Wed	Thu	Fri	Sat	Sun	Mon	Tue	Wed	Thu	Fri	Sat	Sun	Mon	Tue	Wed	Thu	Fri	Sat	Sun	Mon	Tue	Wed	Thu	Fri	Sat	Sun						
		1	2	3	4	5	6					1	2	3									1	2	3	4	5						
7	8	9	10	11	12	13		4	5	6	7	8	9	10									6	7	8	9	10	11	12				
14	15	16	17	18	19	20		11	12	13	14	15	16	17									13	14	15	16	17	18	19				
21	22	23	24	25	26	27		18	19	20	21	22	23	24									20	21	22	23	24	25	26				
28	29	30	31					25	26	27	28	29	30										27	28	29	30							
December 2023							January 2024							February 2024							March 2024												
Mon	Tue	Wed	Thu	Fri	Sat	Sun	Mon	Tue	Wed	Thu	Fri	Sat	Sun	Mon	Tue	Wed	Thu	Fri	Sat	Sun	Mon	Tue	Wed	Thu	Fri	Sat	Sun						
				1	2	3		1	2	3	4	5	6	7				1	2	3	4				1	2	3						
4	5	6	7	8	9	10		8	9	10	11	12	13	14				5	6	7	8	9	10	11	4	5	6	7	8	9	10		
11	12	13	14	15	16	17		15	16	17	18	19	20	21				12	13	14	15	16	17	18	11	12	13	14	15	16	17		
18	19	20	21	22	23	24		22	23	24	25	26	27	28				19	20	21	22	23	24	25	18	19	20	21	22	23	24		
25	26	27	28	29	30	31		29	30	31								26	27	28	29				25	26	27	28	29	30	31		
April 2024							May 2024							June 2024							July 2024												
Mon	Tue	Wed	Thu	Fri	Sat	Sun	Mon	Tue	Wed	Thu	Fri	Sat	Sun	Mon	Tue	Wed	Thu	Fri	Sat	Sun	Mon	Tue	Wed	Thu	Fri	Sat	Sun						
1	2	3	4	5	6	7				1	2	3	4	5					1	2							1	2	3	4	5	6	7
8	9	10	11	12	13	14		6	7	8	9	10	11	12				3	4	5	6	7	8	9		8	9	10	11	12	13	14	
15	16	17	18	19	20	21		13	14	15	16	17	18	19				10	11	12	13	14	15	16		15	16	17	18	19	20	21	
22	23	24	25	26	27	28		20	21	22	23	24	25	26				17	18	19	20	21	22	23		22	23	24	25	26	27	28	
29	30							27	28	29	30	31						24	25	26	27	28	29	30		29	30	31					
Key																																	
Bank Holiday Occasional Day Statutory Training Day * Likely Eid Date EW Enrichment Week W1 Week 1 W2 Week 2																																	

## Key dates

- Monday 4 September 2023: Year 7, 11 & 12 return
- Tuesday 5 September 2023: All other years return
- Monday 17 June 2024: Start of the new academic year (known as 'June-to-June')
- Friday 21 July 2024: Close for the summer

## Training Days

- Friday 1 September 2023
- Friday 24 November 2023
- Tuesday 2 January 2024
- Friday 14 June 2024
- Monday 22 July 2024

The new school year starts from June, with students accessing learning in their new year group shortly after the Spring Bank Holiday.

# Timetable

We recommend you arrive at school for 8:20am for a prompt start at 8:30am. Our day finishes at 3:00pm.

We have five subject lessons a day, a tutor time (or assembly) every day and we have one morning break and a lunchtime.

Student timetables are a two weekly cycle. Below is an example of a timetable of one of two weeks.

Beckfoot	MONDAY	TUESDAY	WEDNESDAY	THURSDAY	FRIDAY
Period 1 8:30am - 9:30am	DT HCD DT10	English LAA E13	History AHO H8	French GLH L5	DT GAW DT9
Period 2 9:30am - 10:30am	PE KEH Sports Dept	Maths FLI M7	Geography LAU H12	Perf-Arts EMT CD1	English ACT E13
Break 10:30am - 10:55am					
Tutor Time 10:55am - 11:20am	Tutor Time THH CA2	Tutor Time THH CA2	Tutor Time THH CA2	Tutor Time THH CA2	Y7 Assembly THH CA2
Period 3 11:20am - 12:20pm	Maths FLI M7	Science SLO S7	Comp Science TCS M14	Maths FLI M7	PE KEH Sports Dept
Lunch 12:20pm - 1:00pm					
Period 4 1:00pm - 2:00pm	English LAA E13	History AHO H8	English LAA E13	RE HCO H7	French GLH L5
Period 5 2:00pm - 3:00pm	Science SLO S7	Music MUS CM1	Art RWS CA4	Science SLO S7	Maths FLI M7



We work in partnership with our Primary colleagues to ensure that your child builds on the excellent learning that they have done in Year 5 and 6.

- English and Literacy
- Maths and Numeracy
- Science
- Geography
- History
- RE
- French or German
- Computer Science
- Music
- Art
- Design and Technology
- Drama and Dance
- PE



During our Wider Learning days (when we suspend the normal curriculum for the day), students are involved in subject based projects and wider PSHE or subject linked activities. Careers exposure is important for students in Years 7 and 8 to get them thinking about their long-term future and ambitions.

- Each tutor session is delivered by a teaching member of staff in a fixed classroom.
- Structured sessions include Time4Tutees, Assembly, PSHCE, Literacy/Numeracy, and Oracy/Metacognition
- Assemblies: Covers personal development themes linked to SMSC, RSE and Current Affairs. These are delivered by staff, students and external speakers.
- Oracy: Supports students in becoming confident communicators.
- Literacy: Promotes core literacy skills and creative writing skills
- Numeracy: Strengthens the fluency in key numeracy skills.
- Metacognition: Equips students with the skills and confidence to take ownership of their own learning.
- Time4Tutees: This session is a once a term meeting, one-to-one with tutors, to discuss 4 key areas of their school journey (Attendance, Attitude to Learning, Home Learning and Extra-Curricular participation
- PSHCE: These cover topics that include Living in the wider world, Health and Wellbeing, Relationships.

Research suggests Home Learning helps secondary students to make much more progress than classroom learning alone. In order to make the most of this, we have developed an evidence-informed approach to Home Learning that incorporates Homework Assignments, Independent Learning Booklets and Class Charts

## Homework Assignments

Your child will be set regular homework assignments by their class teachers. These will have a clear deadline and will be designed to extend and deepen your child's understanding of a particular topic, give them an opportunity to practice key skills within a subject, or revise and prepare for assessments and exams. Details of the Home Learning your child should be doing each week are available through the Class Charts app.

## Independent Learning Booklets

All students must complete at least 20 minutes per day of Independent Learning, (spread across all their subjects) using their Knowledge Organisers. Each half term, your child will be issued an independent learning booklet with all the Knowledge Organisers for that half term, plus some activities to complete at their own pace. These activities are called 'Quiz It, Link It, Map It, Shrink It'. The booklets also contain information on how to support your child with Homework, Revision, and other evidence-informed learning strategies. The booklet is the student's responsibility. If they forget it, they must collect a Day Planner before 8.30am from the atrium. If it is lost, they must purchase a replacement from the Student Facilities Office at a cost of £1.00.

## Class Charts

Class Charts is an app/website that allows us to set and manage homework assignments, communicate with families, and much more. All homework is set by teachers using Class Charts, and you and your child will get real time notifications of when assignments are set, when they are submitted, and any deadlines that are upcoming or missed. This system helps students organise their workload and meet deadlines. You can also use Class Charts to access the same overview. Further information about how to use Class Charts is available on our website, and in your child's Independent Learning Booklet.

## Supporting your child with Home Learning

You don't need to be an expert in a particular subject to help your child succeed. All they need is time and enthusiasm and then the learning will take care of itself. Here are some suggestions that may help get things going:

- Ask your child questions about their Home Learning
- Praise and encourage your child's effort with Home Learning
- Watch the instructional videos on our website
- Help keep a Home Learning routine for your child, including checking Class Charts
- Encourage your child to use the after-school Home Learning Hub/Independent Study Group
- Communicate any issues with us using the Independent Learning Booklet, Email, or Class Charts.

# Extra-Curricular opportunities

We are committed to providing as many enrichment activities as possible for our students. Our aim is to offer activities and enrichment opportunities that compliment and build upon that offered within the curriculum experience. Students and parents are regularly informed of the range of enrichment opportunities available. Here is a taster of some of the activities on offer:

## SPA (Sports and Performing Arts)

Our programme of activities runs across tutor and break time to allow students to access activities in both subject areas, including learning to play a wide range of instruments and playing different sports. Students may sign up to take part in up to two activities each week.

## Out of school trips and enrichment experiences

These trips and enrichment activities are run throughout the year and can range from residential trips within the UK and beyond, whole year group trips e.g. Humanities ACE Day to Bolton Abbey, subject-specific trips as well as reward trips. They are co-ordinated via the Student Facilities Office (SFO). We will let you know about them via the Class Charts App. Payments are made using ParentPay.

## Enrichment Week

This is final week of the school year before students break up for the summer break. It is a week off timetable where students in Year 7, 8 and 9 take part in an activity of their choice.

The EW booklet is issued in November with details of all the activities, ranging from residential trips in the UK and abroad, to local visits, as well as exciting in-house activities. Cost of the trips vary, with free in-house activities available to all.

**BECKFOOT P.E. EXTRA-CURRICULAR**  
*Summer Schedule 2022-23*

	SPA (10.30am - 11.15am)				AFTER SCHOOL (3pm - 4.15pm)			
	COURTS	FITNESS SUITE	ASTRO	FIELDS	ASTRO	FITNESS SUITE	COURTS	FIELDS
MON		Girls' Fitness Years 9-12 Miss Holmes	Softball Years 9-12 Mr Lavel	Athletics Years 8 & 9 Mrs Lavel				
TUE			Rounders Years 8 & 9 Mrs Lavel	Rounders Years 11-13 Miss Lancashire	Boys' Cricket Years 7 & 8 Mr Awan			Athletics All years Mr Taylor & Mr Beckett
WED	Tennis Years 7 & 8 Mr Awan		Softball Years 8 Mr Awan	Athletics Year 7 Mr Lavel	Girls' Cricket All years Miss Lancashire			
THU	Tennis Year 9-12 Mr Awan							
FRI								

**BECKFOOT CREATIVITY EXTRA-CURRICULAR**  
*Winter Schedule 2022-23*

	SPA (10.30am - 11.15am)		AFTER SCHOOL (3pm - 4.15pm)		MUSIC	ART / DT	OTHER
	PERFORMING ARTS	MUSIC	PERFORMING ARTS	MUSIC			
MON	Swire Club Years 7 & 8 Mrs Lavel	Swire Club Years 9-12 Mrs Lavel	Swire Club Years 7 & 8 Mrs Lavel	Swire Club Years 9-12 Mrs Lavel	Swire Club Years 7 & 8 Mrs Lavel	Swire Club Years 9-12 Mrs Lavel	Swire Club Years 7 & 8 Mrs Lavel
TUE	Swire Club Years 7 & 8 Mrs Lavel	Swire Club Years 9-12 Mrs Lavel	Swire Club Years 7 & 8 Mrs Lavel	Swire Club Years 9-12 Mrs Lavel	Swire Club Years 7 & 8 Mrs Lavel	Swire Club Years 9-12 Mrs Lavel	Swire Club Years 7 & 8 Mrs Lavel
WED	Swire Club Years 7 & 8 Mrs Lavel	Swire Club Years 9-12 Mrs Lavel	Swire Club Years 7 & 8 Mrs Lavel	Swire Club Years 9-12 Mrs Lavel	Swire Club Years 7 & 8 Mrs Lavel	Swire Club Years 9-12 Mrs Lavel	Swire Club Years 7 & 8 Mrs Lavel
THU	Swire Club Years 7 & 8 Mrs Lavel	Swire Club Years 9-12 Mrs Lavel	Swire Club Years 7 & 8 Mrs Lavel	Swire Club Years 9-12 Mrs Lavel	Swire Club Years 7 & 8 Mrs Lavel	Swire Club Years 9-12 Mrs Lavel	Swire Club Years 7 & 8 Mrs Lavel
FRI	Swire Club Years 7 & 8 Mrs Lavel	Swire Club Years 9-12 Mrs Lavel	Swire Club Years 7 & 8 Mrs Lavel	Swire Club Years 9-12 Mrs Lavel	Swire Club Years 7 & 8 Mrs Lavel	Swire Club Years 9-12 Mrs Lavel	Swire Club Years 7 & 8 Mrs Lavel



## What is Beckfoot University?

Beckfoot University is a really exciting Year 7 initiative that we have invested in at Beckfoot. The aims of the programme are to:

- Raise aspiration, self-esteem & confidence
- Encourage curiosity and a love of learning
- Enhance motivation and build resilience
- Introduce children to new life experiences
- Offer progression in learning and personal skills development

## Passport to Learning

Each student will be given a passport which is theirs to keep for the year. Students take their passport to extra-curricular events and learning experiences, both in and out of school, and for every hour they complete, they will receive a stamp. Passports are collected by tutors at the end of each term for accreditation.

Activities might include; SPA, afterschool clubs, museums, libraries, sports clubs, tourist destinations, volunteer work and any other experiences that enhance learning. The amount of hours accredited over the year will build towards certificates; the more hours, the higher the award. For those that go above and beyond, additional recognition will be awarded!

## Graduation event

If a student completes 30 hours of accredited additional learning experiences they will attend a graduate event in June where the students will wear a University robe, gown and hat. We also have key-note speakers and a certificate ceremony.

## How can you support this initiative?

At Beckfoot we believe that Beckfoot University complements the Beckfoot learner skills of independence, creativity, being inquisitive and aspirational. We hope that families help support this initiative by encouraging your child to embrace new experiences, take their passports with them to additional learning experiences for accreditation, return them to school and celebrate their achievement with us by attending the graduation ceremony.



Award Level	Accredited hours
Children's University Award	30 65 100
Children's University Certificate	130 165 200
Children's University Diploma	230 265 300
Children's University Degree	330 365

The image shows a dark blue 'PASSPORT TO LEARNING' book with a gold graduation cap logo and the year '2019/20' next to the accreditation table.

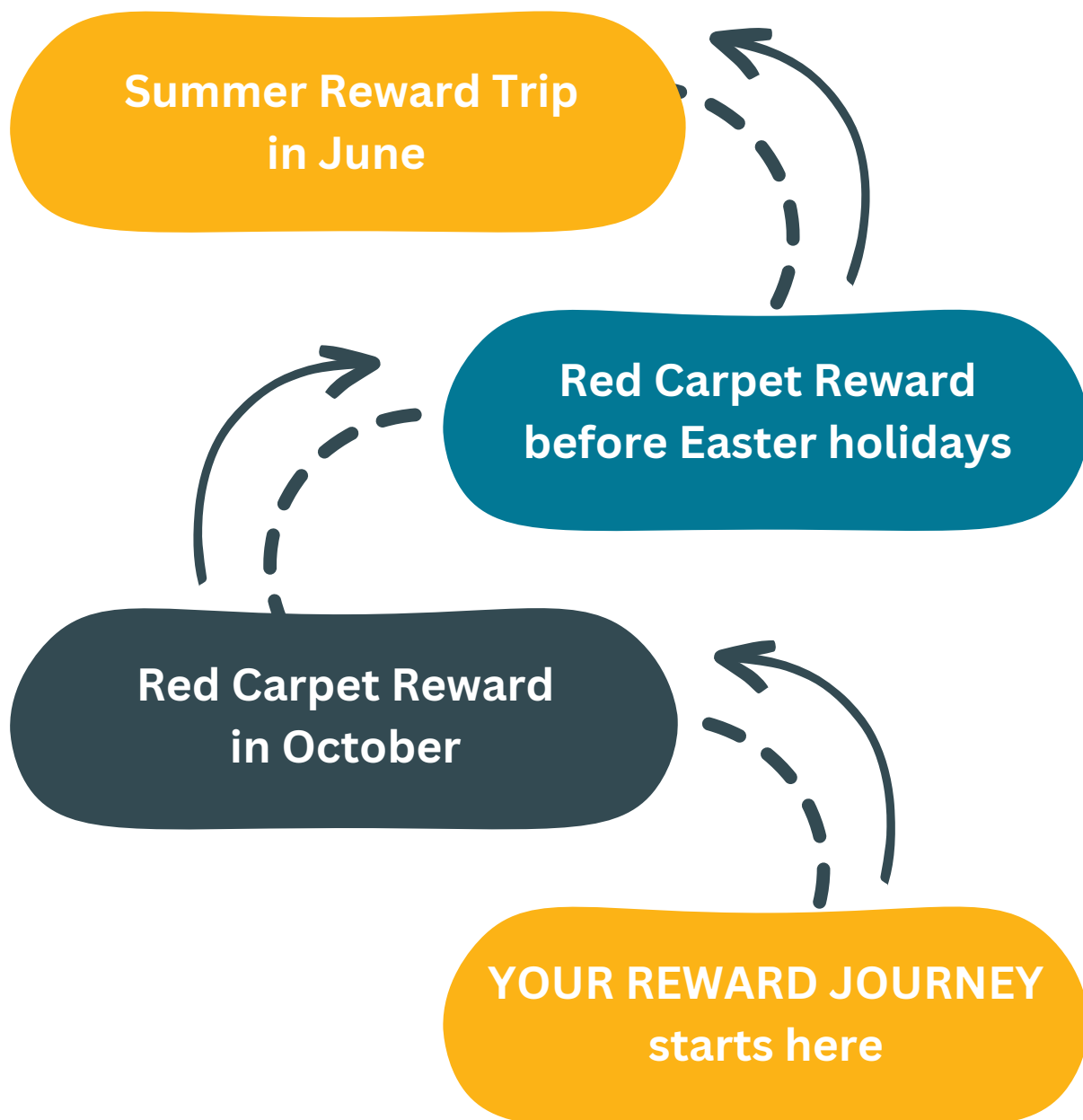




## Rewards

There are various rewards for students throughout the year, including:

- Positive notes / comments on Class Charts (Parents, tutors and teachers can all see this):
  - Teachers and support staff write positive comments on Class Charts when student does something special in lesson.
  - Every week students who achieve all ATL1s for their lessons will get an extra positive comment home with extra points on Class Charts.
  - Teachers, support staff and the Leadership Team may also send personalised well-done messages and acknowledgement texts.
- Red Carpet events - This happens twice a year. Students who qualify for the event through positive AtL scores will chose a reward (Film, Pizza, Gaming, Extra Sport or Art classes).
- Summer Term Reward Trip in June for students who qualify through positive AtL scores for the event.



## Our Expectations: The Beckfoot Six Ps

- Arrive to school on time
- Arrive to lessons on time
- Aim for 100% attendance

**PUNCTUAL**



1

- Ready to learn
- Correct uniform, lanyard and equipment
- Independent Learning booklet

**PREPARED**



2

- Show respect and acceptance:
- In the classroom
- Around school
- In the local community

**POLITE**



3

- Have a 'can-do' attitude
- Look after each other
- Be resilient
- Speak out for others

**POSITIVE**



4

- Pride in my work
- Pride in my progress
- Pride in the school environment (no litter or chewing gum)

**PROUD**



5

- Be focused and on task
- Seek out learning opportunities

**PROACTIVE**



6

## In My Lessons

	Attitude to Learning	Beckfoot Learner: What it means for me	Beckfoot Teacher: PLS steps
ATL 1	I am <u>consistently meeting</u> the Beckfoot Six Ps in all that I do.	<ul style="list-style-type: none"> <li>♦ I will make good progress</li> <li>♦ I will <u>receive 20 reward points</u></li> <li>♦ I will receive positive messages via Class Charts</li> <li>♦ I will access rewards, Red Carpet events and celebration trips</li> </ul>	<ul style="list-style-type: none"> <li>♦ Take the register</li> <li>♦ All students start on ATL 1</li> <li>♦ Optional Class Charts comment</li> </ul>
ATL 2	I have demonstrated a desire to improve. I have participated and worked well. I show respect and acceptance. However, my ATL does <u>not fully meet</u> the Beckfoot Six Ps.	<ul style="list-style-type: none"> <li>♦ I will <u>receive 0 reward points</u></li> <li>♦ I will work to keep my ATL 2</li> <li>♦ I will have a chance to correct my behaviour to meet the Beckfoot Six Ps</li> </ul>	<ul style="list-style-type: none"> <li>♦ ATL changed on SIMS register</li> <li>♦ Verbal reason given</li> <li>♦ Late to lesson - click Class Charts icon and add minutes late</li> <li>♦ Lack of home learning - click Class Charts icon</li> <li>♦ Phone visible - click Class Charts icon, confiscate phone and pass to Year Team</li> </ul>
ATL 3	I have <u>repeatedly</u> (more than once) demonstrated ATL that does <u>not fully meet</u> the Beckfoot Six Ps.  I have <u>challenged</u> staff instructions.	<ul style="list-style-type: none"> <li>♦ I will <u>lose 10 reward points</u></li> <li>♦ Two ATL 3 in a week = 30min HoY after-school detention</li> <li>♦ Four ATL 3 in a week = x2 30min HoY after-school detentions</li> <li>♦ Six ATL 3 in a week = 60 minute Leadership Team after school detention</li> <li>♦ Parental/carers meeting for persistent offences</li> </ul>	<ul style="list-style-type: none"> <li>♦ ATL changed on SIMS register</li> <li>♦ Click ATL3 icon on Class Charts with comment and 'P' reference</li> </ul>
ATL 4	I have <u>refused</u> to follow staff instructions. I have <u>repeatedly disrupted</u> the learning. I have exhibited <u>dangerous</u> or <u>abusive</u> behaviour.	<ul style="list-style-type: none"> <li>♦ I will <u>lose 20 reward points</u></li> <li>♦ I will spend time in Isolation and lose my social time</li> <li>♦ My parents/carers will be contacted</li> <li>♦ Persistent 4s will result in a parental/carers meeting, time out at another school and possible suspension</li> </ul>	<ul style="list-style-type: none"> <li>♦ On Call (removed from lesson)</li> <li>♦ ATL changed on register</li> <li>♦ Click ATL4 icon on Class Charts with comment</li> </ul>

## Our Expectations: The Beckfoot Six Ps

- Arrive to school on time
- Arrive to lessons on time
- Aim for 100% attendance

**PUNCTUAL**



1

- Ready to learn
- Correct uniform, lanyard and equipment
- Independent Learning booklet

**PREPARED**



2

- Show respect and acceptance:
- In the classroom
- Around school
- In the local community

**POLITE**



3

- Have a 'can-do' attitude
- Look after each other
- Be resilient
- Speak out for others

**POSITIVE**



4

- Pride in my work
- Pride in my progress
- Pride in the school environment (no litter or chewing gum)

**PROUD**



5

- Be focused and on task
- Seek out learning opportunities

**PROACTIVE**



6

## In My Community

CODE	COMMUNITY POINTS	REWARDS/CONSEQUENCES
C1	Helping in the community, charity work, outstanding student leadership, extra-curricular events, excellent citizen, going the extra mile, half-termly attendance award, half-termly ATL award	Additional reward points (20 reward points) Note on Class Charts Text message home/email home/phone call home Additional reward events
C2	Lack of lanyard Lack of Independent Learning Booklet Late to school - once in a week Late to lesson - once in a week Incorrect uniform	One C2 in a week = break detention
C3	Persistent lateness to school (more than once in a week) Persistent lateness to lessons (more than once in a week) Persistent incorrect uniform Persistent failure to follow mobile phone rules Persistent lack of lanyard or Independent Learning Booklet Persistent failure to submit Home Learning Failure to attend 30 minute or break detention Challenging staff instructions Fighting - equally to blame Failure to collect lanyard sticker or Independent Learning Booklet Selling food or drinks Internal truancy Chewing gum Inappropriate language or behaviour Out of bounds	After school detention for each occurrence Lose 10 reward points  Lose 10 reward points One C3 in a week = 30min HoY after-school detention Two C3s in a week = 2 x 30min HoY after-school detentions Three C3s in a week = 60 min Leadership Team after school detention Parental/carers meeting for persistent offences Comment on Class Charts
C4	Persistent poor behaviour Persistent refusal to follow staff instructions/total defiance Disrespectful or derogatory language/behaviour (biphobia, disablism, homophobia, racism, sexism, sexualised language, transphobia) Dangerous behaviour Fighting - equally to blame (serious) Theft/vandalism Failure to attend Leadership Team detention Improper use of technology External truancy	Lose 20 reward points Isolation and loss of social time Parents/carers will be contacted Persistent C4s will result in a parental meeting, time out at another school and possible suspension External agencies may be contacted Comment on Class Charts
C5	Abuse to students and/or staff (biphobia, disablism, homophobia, racism, sexism, sexualised language, transphobia) Spitting with malicious intent Unprovoked assault Enabling trespassing Throwing an item over balcony Possession of cigarettes/vapes/lighters on site Persistent breach of school rules Persistent vandalism Possession of a dangerous item or illegal substance Serious misuse of technology Persistent abuse to students and/or staff - bullying	Lose 50 reward points Time out at another school Suspension from school (including a risk of permanent exclusion) Parents/carers will be contacted and a readmittance meeting will take place Comment on Class Charts External agencies may be contacted



In all aspects of appearance, our aim is personal smartness, demonstrating our pride as part of the Beckfoot community. We ask parents and carers to support our Smart Uniform Policy.

## Compulsory items for school

- White (black for KS4) Beckfoot polo shirt with school logo.
- Blue (black for KS4) Beckfoot sweatshirt with school logo.
- Black tailored school trousers appropriate for school wear. No studs, leggings (stretch fabrics or Lycra), cropped trousers or jeans.
- Shoes should be traditional school style without any logo. No trainers, canvas shoes or fashion wear.
- Skirts should be traditional school style and knee length. No stretch fabrics or Lycra.
- Black full length plain socks, or plain black or flesh coloured tights. Sports socks should not be worn with school uniform.
- Excessive jewellery, make up and acrylic nails are not allowed.
- Hair colour should be natural in its entirety. No extreme styles or tramlines.
- One stud in each earlobe and/or nose stud is permitted. Other facial or body piercings are not allowed.
- Lanyards should be worn as part of our uniform.
- Outdoor coats and PE hoodies must not be worn in the building.
- Headscarves may be worn for religious purposes and should be either plain navy blue (KS3) or plain black (KS4).

## Compulsory items for PE

Top half:

- Beckfoot branded polo shirt (choice of fitted or loose option);
- Optional Beckfoot branded rugby shirt; and/or
- Beckfoot branded hoodie.

Bottom half:

- Beckfoot branded leggings; or
- Beckfoot branded skort (we recommend girls wear something over the top of these for school); or
- Beckfoot shorts/plain navy blue tracksuit bottoms (small logo allowed but not over branding).

Footwear:

- Beckfoot branded navy blue long socks (white socks may be worn when shinpads are not required); and
- Trainers (no pumps)

Other:

- Shinpads are compulsory for football and hockey lessons.
- All jewellery must be removed for PE lessons (in exceptional circumstances, where jewellery cannot be removed, own tape must be provided).
- Hair bobbles/clips/bands required to keep hair out of face.
- Navy blue base layers may be worn in winter.



Individual adjustments to the uniform policy will be considered at the discretion of the Headteacher.

**As with all our school expectations, failure to meet these standards will result in an immediate sanction as stated in our Positive Learning Strategy (PLS).**



All uniform is available from Natasha Schoolwear (Bradford) and Whittakers Schoolwear (Shipley).

## Lost property

All your child's possessions, including clothing, should be named, in order to facilitate returning found articles. All lost property should be handed in at the SFO (Student Facilities Office) by reception. If a student loses any item they should ask at the SFO if it has been found. These are held until the end of term and then put on display for the students to reclaim. Anything unclaimed will then be donated to charity. Beckfoot School accepts no responsibility for the safety and security of your child's possessions. Please consider whether to allow your child to bring valuable items on site.

## Each day, students must bring:

- Their Independent Learning Booklet (ILB)
- Their lanyard
- A pencil case
- x3 blue or black biros
- x3 pencils
- A green pen
- A ruler
- A sharpener
- A rubber
- A compass
- A protractor
- A basic scientific calculator
- Mini-whiteboard pen
- Mini-whiteboard rubber (small cloth/old sock work fine!)
- Glue stick
- A bag
- PE kit (on PE days)
- Trainers (optional for break time)



Scissors should not be brought into school.

**As with all our school expectations, failure to meet these standards will result in an immediate sanction as stated in our Positive Learning Strategy (PLS).**

In secondary schools, the range of food on offer tends to be wider and more varied than in primary schools. This is because secondary schools must cater for children's changing and developing tastes and expectations during their teenage years. The dining room is likely to be bigger, busier and noisier than your child was used to at primary school, but there are staff and students available to support and reassure new students and to help them make healthy choices.

Catering at Beckfoot School is managed by Facilities Management, the Bradford Council Catering Service. Students can purchase food from the various outlets in the atrium before school, break and lunchtime.

## Cashless catering / ParentPay

At Beckfoot, all payments for food or drink are made via a cashless card. Money can be added to the card by putting cash into the 'Reval' machines in school.

You can also use an online payment system called ParentPay. It's simple, safe and convenient and your child no longer needs to bring cash into school. ParentPay is an online payment system for schools. It allows parents to pay quickly and securely for school meals, trips and activities, uniforms, music lessons and fees. You simply top-up your ParentPay account online by debit or credit card, or in cash through PayPoint stores. Your ParentPay balance can be used immediately to pay for any of your children's items at school using ParentPay. More information can be found at <https://www.parentpay.com/>

## What are the benefits of ParentPay?

- ParentPay is easy-to-use and will offer you the freedom to make online payments whenever and wherever you like, 24 hours a day, 7 days a week.
- The technology used is of the highest internet security available ensuring that your money will reach school safely – offering you peace of mind and fully compliant with GDPR.
- Payments can be made by credit or debit card.
- Full payment histories and statements are available to you securely online at any time.
- Your child/children will not worry about losing money at school.
- ParentPay will soon be announcing a SmartPhone App to make payments even more convenient.

You will receive an invitation to activate a ParentPay account before September.



# Travel to and from school

Students must be positive ambassadors for Beckfoot when travelling to and from school. They are expected to behave in a sensible, mature manner on all forms of transport. This means all school services and also the buses and trains used by the general public. We aim to ensure that everyone travelling on school transport is safe and gets to and from school on time.

## School buses

Generally, buses are reasonably on time, but because of congestion or accidents on the A650, they are sometimes late. Both the school and the bus companies are keen to get students home safely and on time, therefore a replacement service is normally provided as soon as possible. Unfortunately, students may have to wait for its arrival. Students will be required to apply for a 'Priority Photocard' to use the school bus service for the academic year to ensure that the WYCA plan correct routes for our students.

All students travelling by a school service bus have a Priority Photocard (a school bus travel card). Public bus services do not. There is no cost associated with this. To apply, please click the following link: [https://metro.flexiroute.net/app\\_form\\_new\\_secondary.html](https://metro.flexiroute.net/app_form_new_secondary.html)

The school buses from September 2023 are:

- BF1: Wilsden Post Office
- BF2: Keighley Road
- BF3: Greengates
- B50: Eldwick



If you are unsure which service to choose, please click this link:

<https://www.wymetro.com/your-school/a-z-school-finder/b/beckfoot-school/> for the latest changes to school bus services.

## Other bus services

Public service buses on Route 615/616, 662 & 60 also pass near to Beckfoot School. There is no direct public bus service for students travelling from Eldwick & Gilstead, so use services 615/616 and then change to 662. We advise students to use the B50 school Bus Service for this route. Other public buses are Bingley (662 & 60), Keighley (662 & 60), Shipley (622 & 60), Saltaire (662 & 60), Greengates (60) or Bradford (662). Please contact Metroline7676 for further details or visit [www.wymetro.com](http://www.wymetro.com)

## Payment arrangements

Students can pay a cash fare on boarding the bus, which varies by distance, but is generally between £1.00 and £1.80 per single journey for students with an Under 16 or 16-18 Photocard. Please note that students without one of these Photocards will be required to pay the full adult fare. FirstDay and FirstWeek tickets are not valid. MCard and Metrocard passes are valid or they can purchase a weekly or monthly. Under 19 travel ticket at any Payzone or at a Bus Station Travel Centre.

# Travel to and from school

## Home to school travel

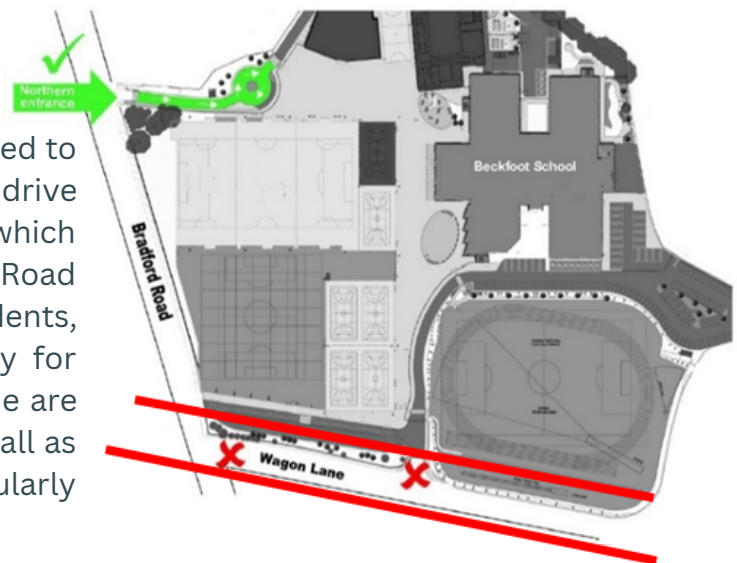
If you would like to apply for support with home-to-school travel arrangements, visit <https://bso.bradford.gov.uk/content/schooltravel>. If you qualify for support with home-to-school travel arrangements, you will be issued with one of the following:

- A zero-fare School Pass to use on public service buses and/or on any of the school bus services (except service B48); or
- A zero-fare Boarding Pass to use on service B48, if you live on the route of this service.

Please note the information contained here is correct at the time of publication (June 2023) and may be subject to change. Please check <https://www.wymetro.com/schools/> for up-to-date school transport information.

## By car

The map on the right indicates where you are permitted to drop off or collect your child/children. Parents must drive onto the purpose built drop-off and turning circle which can be accessed via the northern, Bradford Road Entrance. Parents are asked, for the safety of students, not to use the front entrance driveway or bus bay for parking or turning. The school, police and fire brigade are anxious to avoid parents turning into Wagon Lane at all as parking restrictions are in place and the police regularly patrol and issue tickets for violations.



Our collective concern is that there is nowhere on Wagon Lane, or at the front entrance, where it is safe to turn around. Therefore, please do not use these areas to drop off or collect your child.

## On foot

The A650 is a very busy road and great care must be taken if you stop to drop off or collect children. For safety reasons, students are advised to use public footpaths and designated walkways around the school site. To cross the busy A650 Bradford Road, students must use the puffin crossing.

## By bicycle

There is a cycle store located by the turning circle and another by reception. Please ensure your child wears a cycle helmet, has a bike lock, and adheres to the Highway Code.

---

*We look forward to you starting with us in September and if you have any questions before then, please email [beckfoottransition@beckfoot.org](mailto:beckfoottransition@beckfoot.org)*

---