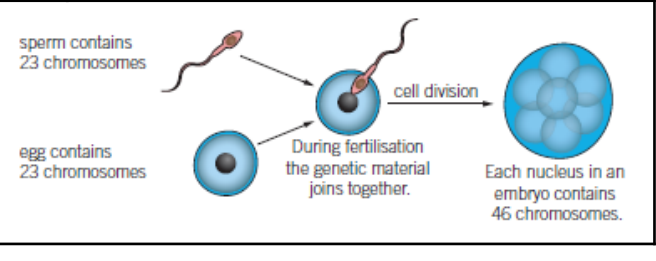


Knowledge: Extinction

1	All species will become extinct when all of a species die out
2	The fossil record shows animals existed in the past which have now become extinct
3	Extinction can be caused by new diseases, new competition, new predators, destruction of habitat and environmental changes.
4	Extinction reduces biodiversity

Knowledge: Inheritance

1	Characteristics are passed from parents to their offspring
2	Half of the genetic information comes from each parent.
3	During fertilisation the genetic material joins together



Knowledge: Natural selection

The best adapted animals will survive to pass on their genes (Charles Darwin)	
1	Variation of characteristics shown within a species caused by their genes.
2	Organisms with best adaptations survive and reproduce, weaker ones die out.
3	Genes from successful organisms pass onto the next generation.
4	Over time the best adaptations continue to pass on forming a new species.
The organisms we see on Earth today have developed over millions of years this is Evolution.	

Knowledge: Punnet Square

	Possible alleles from father		
	B Dominant allele for brown eyes	b Recessive allele for blue eyes	
Possible alleles from mother	b Recessive allele for blue eyes	Bb Offspring have brown eyes as B is dominant	bb Offspring have blue eyes as both alleles are recessive
	b Recessive allele for blue eyes	Bb Offspring have brown eyes as B is dominant	bb Offspring have blue eyes as both alleles are recessive

Key Vocabulary

1	Allele	Different version of a gene, which codes for the same characteristic, for each characteristic there are two alleles.
2	Dominant	The characteristic will be displayed, represented by a capital letter
3	Recessive	Will not be displayed as a characteristic unless there are two of the same allele, represented by a small letter
4	Genetic modification	The process scientists use to alter the genes of an organism

Knowledge: DNA

DNA is the material which contains all of the genetic information		
1	DNA in the shape of a double helix	
2	Dene –a section of DNA which holds information for a particular characteristic	
3	Chromosome –long strand of DNA	